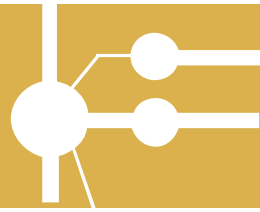


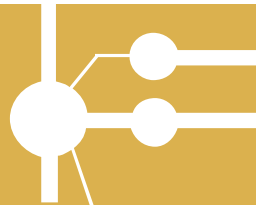
USER'S MANUAL Configuration program

version 1.3



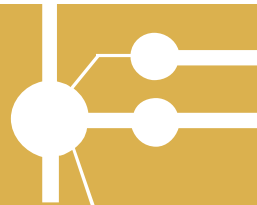
Dear customer,

*Our compliments on buying the **2N[®] - OMEGA Lite**. This new product was developed with an emphasis on the maximum possible use value, quality and reliability. We hope that you will be utterly satisfied with the 2N[®] - OMEGA Lite for many years to come.*

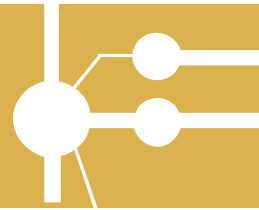


CONTENTS

1. The PBX configuration instrument menu	5
1.1. Data.....	5
1.2. Windows.....	6
1.3. Settings.....	6
1.4. Help.....	7
2. Programming tables for the 2N⁰ - OMEGA Lite PBX	7
2.1. Global data.....	9
2.1.1. Information.....	9
2.1.2. Hardware.....	11
2.1.3. Diagnostics for the PBX and localisation.....	11
2.1.4. External lines.....	12
2.1.5. Internal lines.....	15
2.1.6. Tone parameters.....	17
2.1.7. Parameters for voicemail.....	18
2.1.8. Authorisation numbers.....	18
2.1.9. Emergency numbers.....	19
2.1.10. Passwords.....	19
2.1.11. Bank holidays.....	19
2.1.12. Charging.....	19
2.1.13. Tones and ringing.....	20
2.1.14. Voices.....	22
2.1.15. Modem.....	23
2.2. Internal lines.....	24
2.2.1. Numbering.....	24
2.2.2. Access to external lines.....	24
2.2.3. Permitting services.....	28
2.2.4. Departments.....	31
2.2.5. Allocating to a group and a department.....	31
2.2.6. Calling to a department.....	31
2.2.7. Global data.....	31
2.2.8. FLASH settings and the type of dialling.....	31
2.2.9. Allow direct dialling to bundles.....	32
2.2.10. Work and private MSN.....	32
2.2.11. Operating parameters.....	32
2.3. System lines.....	33
2.3.1. Buttons.....	33
2.3.2. Allowing services.....	34
2.4. Virtual lines.....	34
2.4.1. Numbering the virtual lines.....	34
2.4.2. Direct selection on the bundles allowed.....	35
2.4.3. Tariff credit.....	35
2.4.4. Authorisation.....	35
2.4.5. Allocating a bundle.....	35
2.4.6. Mask for dialling analysis.....	35
2.5. External lines.....	36
2.5.1. Types of lines.....	36
2.5.2. Types of digital lines.....	37
2.5.3. Trunks.....	41
2.5.4. Trunks for accessing ringing.....	41
2.5.5. Ringing.....	41

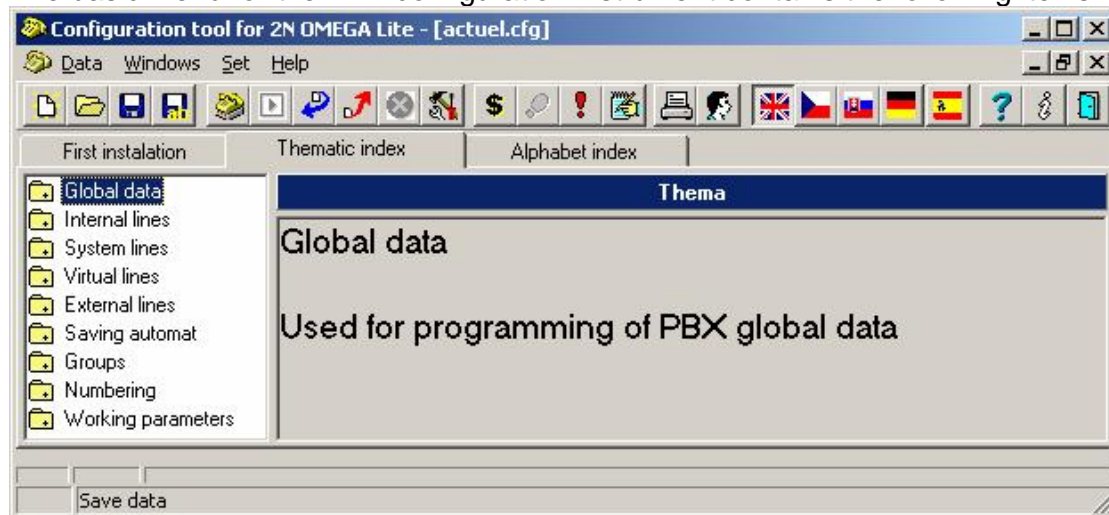


2.5.6.	Ringing table	43
2.5.7.	Global data	47
2.5.8.	Groups and switching	47
2.6.	Saving automat	48
2.6.1.	Dialling analysis	48
2.6.2.	Routes - providers	49
2.6.3.	Dialling analysis mask	50
2.7.	Groups	51
2.7.1.	Designating lines	51
2.7.2.	Intercoms	52
2.7.3.	Switching time	52
2.7.4.	Global data	53
2.8.	Numbering	55
2.8.1.	Internal lines	55
2.8.2.	Services	55
2.8.3.	DID for the ringing table	55
2.9.	Operating parameters	55
2.9.1.	Internal lines	55
2.9.2.	External lines	56
2.10.	Mobility Extension	57
2.10.1.	Mobility Extension IN	57
2.10.2.	Mobility Extension OUT	59
2.10.3.	Mobility Extension services	60
2.11.	Short / Speed - Dialing	61
2.11.1.	Common Abbreviated Dialing	61
2.11.2.	Private Abbreviated Dialing	62
2.13.	REMOTE SUPERVISION	64
2.13.1.	What Remote Supervision Provides:	64
2.13.2.	What You Need	64
2.13.3.	Creating and writing of a gateway remote access code	64
2.13.4.	Description of OMEGA Lite Program Menus and Bar Buttons	67
2.13.5.	Types of Establishing Connection	69
2.13.6.	AUTOMATIC CONNECTION	69
2.13.7.	MANUAL CONNECTION	72
2.13.8.	Downloading Data	73
2.13.9.	Panel	73
2.13.10.	Remote Supervision Logistics	73
2.13.11.	Disconnecting Connection	73
2.13.12.	Cancelling Connection	74



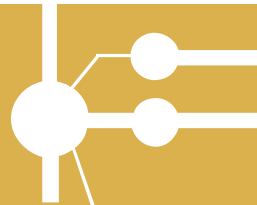
1. The PBX configuration instrument menu

The basic menu for the PBX configuration instrument contains the following items:



1.1. Data

- New Making a new PBX configuration file
- Open... Opening a current configuration file
- Close Closing an open window with a configuration file
- Save Saving a file
- Save as ... Saving a file under another name
- Firm values Using the factory settings in the default set up
- From the PBX Reading the configuration from the PBX
- To the PBX Saving a configuration into the PBX
- Reset the PBX Reset the PBX (the same function as turning on and off)
- Time synchronization Setting the time to the PC which is connected to the PBX
- Upload the PbX software Loading firmware into Flash.
- Reset and boot the PBX from Flash Reset the PBX with firmware support into Flash and rewriting it into RAM.
- Freezing the PBX The PBX switches to the service regime. Ongoing calls are completed other calls cannot be started. This state is indicated by the sign "PBX repairs!" on the system phones. Afterwards it is possible to turn the PBX off and change the modules. The PBX switches to the operating state after the command "Unfreeze PBX" or after turning on or off.
- Unfreezing the PBX Returning to the operating state.
- Print actuel window
- Printing sets
- Print setup
- Close the program

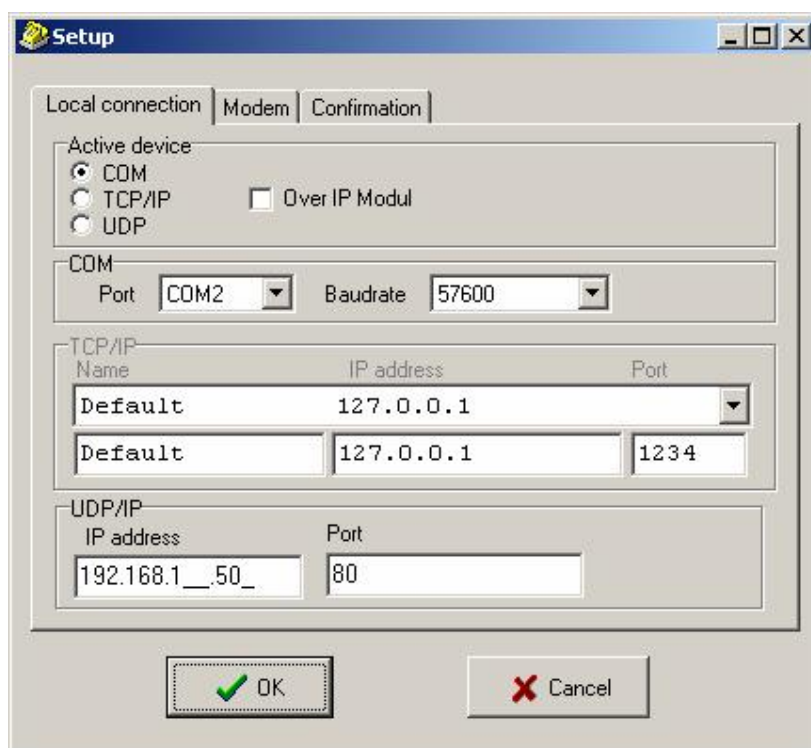


1.2. Windows

- Cascade Grouping the windows into a cascade
- Tile Grouping the windows next to each other without overlap
- Arrange icons

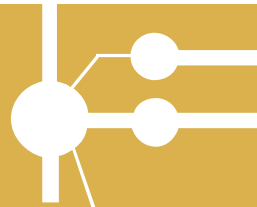
- Panel The state of the lines
- Account data Displaying calls
- PBX diagnostics Displaying log system reports

1.3. Settings



Settings for: - local connections -connection to a COM port or a LAN
- modem - remote control /telemonitoring
- confirmation - reading and entering DAT into the PBX

- Select communications device select COM, TCP/IP, UDP
- TCP/IP Setting IP addresses of PC where an XAPI server is running
- Selecting COM Selecting the COM ports
- COM Baud speed Setting the speed of communication with the PBX
- Select language Choosing the language you want to use



1.4. Help

- Contents help
- Search... for words in help
- Using help general instructions for using help in OS WIN
- About the application information on the SW version of the Program

2. Programming tables for the 2N⁰ - OMEGA Lite PBX

The following passages give a detailed description of all of the programming parameters in the 2N⁰ - OMEGA Lite PBX. The chapter is in the same position as the menu in the PBX configuration device's themed index.

For access to programme the PBX you need a password.

The PBX configuration instrument enables **two** types of users to change the PBX settings.

Password for a Supervisor user

The user with the **supervisor** authorisation has access to all of the PBX parameters and can also change the password for a user with **user** authorisation.

Password for an ordinary User

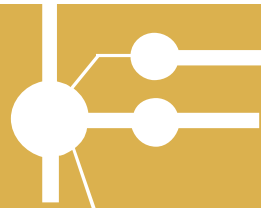
The **user** authorisation only allows certain PBX parameters to be changed when programming and the **User** password to be changed.

All parameters are available for reading.

The user can change the following parameters

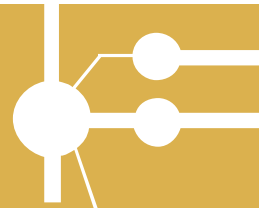
- Authorisation numbers
- Emergency numbers
- Bank holidays
- The name of the VL
- Internal priority lines
- Authorisation without ARS
- Allowing services – all
- Divisions
- Classification into groups and divisions
- Calling to the entire division
- FLASH and the type of choices for VL
- Allowing direct choice for bundles
- Operating parameters for internal and external lines
- Buttons for system telephones
- External lines – name and type of choice
- Bundles for ring retrieval
- Assigning ringing tables into the ringing table for external lines
- Labelling lines
- Switchover times
- Global group data – dialling tone, softening tone, DISA tone
- Quick dialling – joint and personal

2N[®] - OMEGA Lite Configuration instrument



The standard password setting for both users is 1111.

Without the password the PBX cannot be programmed. Please remember the password!



2.1. Global data

2.1.1. Information

This item informs you on the construction of the PBX that you are programming. Here you will find the number of the SW version in the PBX, the production number of the PBX to which you are connected, the time for which access to the PBX by remote control is allowed and a precise labelling of the PBX firmware saved in the RAM and FLASH memory. This labelling is in accord with the file name used to upgrade the firmware in the PBX.

Information

PBX 2N OMEGA Lite

Version: 4.02	Revision: 05
Serial No.: 0609/50006	RA Validity: 363
Board No.: 07-0201-0035	
SW valid: Not limited	ME valid: ---
Last license: ---	Last license: ---
	ME count: 2

RAM : **V4.02CZ.OmegaLite.20070622.1134.Rev.5.bin**
FLASH : **V4.02CZ.OmegaLite.20070622.1134.Rev.5.bin**

IL :	5
SYS :	4
AUDIO :	0
CD :	1
ISDN :	2
GSM :	2
VoIP :	0

Last update: User:
SuperVisor: 22.6.2007 14:48:52

Information about licences:

RA Validity - expiring period for remote control with integrated modem to PBX (according to main board type).

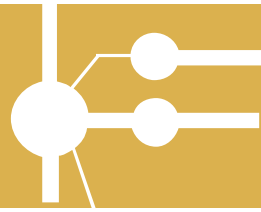
SW valid - SW validity expiring period (it is possible to make only emergency calls after expiring of this period).

Last license - sequence number of inserted licence. It is possible to enter just a licence with higher sequence number, than the number which is in the PBX right now. Such a licence can be entered only once.

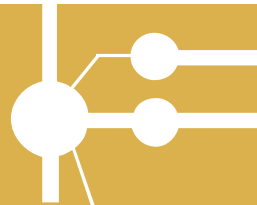
ME valid - licence expiring period of Mobility Extension service.

ME count - maximum count of Mobility Extension service users. (default users count = 2, without validity limitation).

2N[®] - OMEGA Lite Configuration instrument

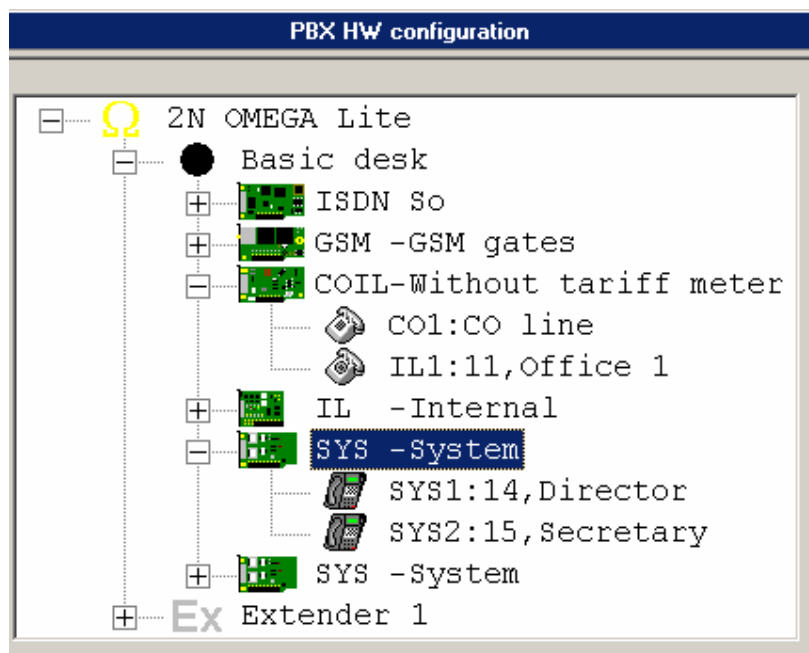


Licence is entered using configuration tool. It is done by pressing the „key“ sign button on the main menu bar.



2.1.2. Hardware

Information on the physical construction of the PBX including the attachment of the individual types of modules at all positions in the PBX. Individual modules can be added or taken away thus altering the PBX's construction. However the simplest way is to read the actual configuration directly from the PBX along a series port or through the TCP/IP protocol.



2.1.3. Diagnostics for the PBX and localisation

The screenshot shows a window titled "Localization". It contains two sections:

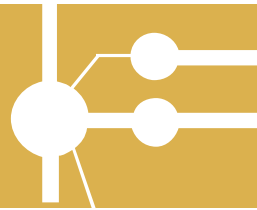
Localization

International	<input type="text" value="00"/>
National	<input type="text" value="0038"/>
Local	<input type="text"/>

Installation

Person	<input type="text" value="Peter"/>
Place	<input type="text" value="2N TELEKOMUNIKACE a.s., Prague"/>

If you use external and internal lines with call identification support, then fill in the part *Localisation*:



International – fill in the international calling code (usually 00)

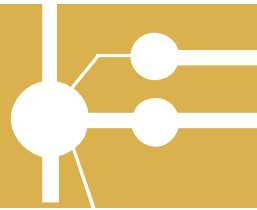
National – fill in the country code in the national network (for the Czech Republic (CR) it is 00420)

Local – fill in the local transfer number in the ISDN network (usually 0, not used in the CR)

In the section *Installation* you assign who and where is installed in the PBX.

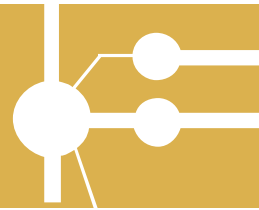
2.1.4. External lines

- **Minimum ring time.** Determines how long the minimum continuous ringing from an external line must be detected for the external line to be announced as ringing.
- **Minimum quiet for ring end.** It is the pause in the ringing from an external line after which the ringing from an external line is considered finished.
- **Pause length for dial CO.** Enables a pause to be entered between the numbers dialled. Used in complementary numbers after quick dialling and after detecting routes.
- **FLASH length to CO.** Enter the length of the FLASH signal generated by the PBX to the external port.
- **Dial pulse to CO.** Enter the length of the dial pulse's impulse to the external port.
- **Dial gap to CO.** Serves to set the gap length for pulse dialling to an external port.
- **Gap between numbers PV.** Serves to assign the gap length for pulse dialling sent to an external pulse.
- **DTMF dial length.** Serves to assign the length of broadcasting the dual tone multi-frequency (DTMF) dialling to an external port. This value also determines the DTMF dialling pause.
- **Waiting for a CPT CO.** Determines the maximum period the PBX spends trying to detect the external dialling tone used to determine the working of the external port.
- **DTMF dial CO translation.** The dialling gap for an internal tonal line to an external tonal line after which the dialling to the external line is only heard.
- **Test Rrpetition CO.** How much a faulty external line test is repeated.
- **CO OUT Relax.** The minimum time for suspending an external line after an outgoing call.
- **CO In Relax.** The minimum time for suspending an external line after an incoming call.
- **End of waiting on a DISA/FAX/modem.** The time an incoming external call waits after detection by the CNG (fax signal) or after direct inward calling on a free or engaged subscriber before hanging up on the external line or carrying on with another row in the call table.
- **1st dial to CO time.** The maximum time for delay when dialling an external line. If there is no dialling during this time the external number is hung up on.
- **Dial to CO time.** The maximum time for delaying in dialling an external line. It is renewed after every new number dialled by the internal user and, after it has expired, the device switches from dialling to calling. It is permissible for the



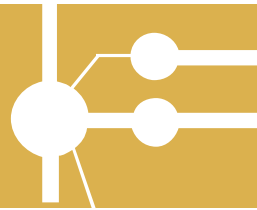
expiration of this time to be marked by a short peep. Any other calling after this time has elapsed is considered to be a call service.

- **Dial to GSM time.** The maximum time for dialling another call to a GSM line. It is renewed after every new number dialled by the internal user and, after it has expired, the device switches from dialling to calling. It is permissible for the expiration of this time to be marked by a short peep. Any other calling after this time has elapsed is considered to be a call service
- **Max call time without break-up.** The maximum time for a call of two external lines that have connected break up signalling.
- **Max call time with break-up.** The maximum time for a call of two external lines that do not have connected break up signalling.
- **Trace ISDN.** The selection allows the type of diagnostics for the ISDN modules to be set after restarting the PBX.
- **ISDN blocking time after extern. busy.** The time for which the ISDN line is not accessible after a previous occupancy by external equipment (e.g. by an ISDN modem).
- **Don't disintegrate conference.** Allowing no collapse for conferencing between an internal line and at least two external lines after the internal line has hung up.



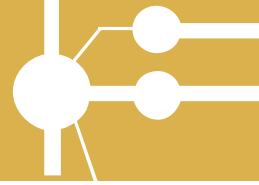
External lines - Global data

Minimum ring time	[ms]	100
Minimum quiet for ring end	[ms]	6 000
Pause length for dial CO	[ms]	1 000
Flash length to CO	[ms]	100
Dial pulse to CO	[ms]	60
Dial gap to CO	[ms]	40
Gap between numbers PV	[ms]	800
DTMF dial length	[ms]	100
Waiting for CPT CO	[ms]	5 100
DTMF dial CO translation	[ms]	1 000
Test repetition CO	[s]	60
CO Out Relax	[ms]	2 000
CO In Relax	[ms]	5 000
End of waiting DISA/FAX/modem	[s]	60
1.dial to CO time	[s]	14
Dial to CO time	[s]	10
Dial to GSM time	[s]	5
Max. call time without break-up	[s]	300
Max. call time with break-up	[s]	900
Trace ISDN		Not trace
ISDN blocking time after extern.busy	[s]	20
Don't disintegrate conference		<input type="checkbox"/>



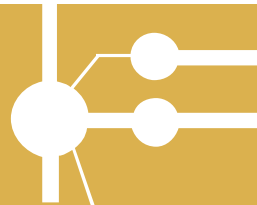
2.1.5. Internal lines

- **Pulse #.** The digit replacing the tone hash on pulse telephones.
- **Pulse *.** The digit replacing the tone asterisk on pulse telephones.
- **Time for 1st dialling.** Defines the maximum time waiting for the first number to be dialled after phone is picked up. The line gets the engaged tone after this time period has elapsed.
- **Time for further dialling.** Defines the maximum time spent waiting for the next number to be dialled from an internal line. After it has lapsed the engaged tone is heard and the call is cancelled.
- **Crossing Time to failure loop.** Defines the time period before the engaged tone is sent following unsuccessful dialling. After the line goes to a fault loop.
- **Bad dial key protection.** The time period for which the next digit dialled is ignored after dialling the entire number. It serves to prevent inadvertent call back after unsuccessful dialling.
- **Switching on lock.** The time the intercom lock is fastened.
- **Regime supervisor is valid.** The time period for which the supervisor services can be called upon after logging in to the Supervisor service
- **Ticking after attach.** The time for which a ticking can be heard on the call after connecting. After this period the service cannot be disconnected from the call.
- **Back to forwarder.** The time the PBX tries to get a connection after reconnecting with a hung up line. After this time it carries on in getting a connection but it also starts ringing back to the switcher.
- **Back to operator.** If the target user does not pick up the phone in this period the ringing goes back to the operator.
- **End of switching over.** After this period the PBX considers the call as dead. The caller is told this by a voice telling them that all lines are unavailable and the call is cancelled.
- **Ringling of holding CO.** The time between being notified by tinkling on an internal line that an external call is on hold.
- **End of holding.** The time limit for a temporarily held external line to be hung up.
- **Time of back ringing.** The time call back lasts for.
- **Length of alarm ringing.** The time the alarm will ring after activating it on an internal line.
- **Delay from front.** The time when a new incoming call is not accepted after having been hung up.
- **Increasing of DTMF resistant for DISA.** Min. length of the DTMF sign that is accepted in the DISA direct inward calling.
- **Increasing of DTMF resistant for VMail.** Min. length of the DTMF sign that is accepted in VoiceMail.



Internal lines - Global data

Pulse # :		<input type="text" value="7"/>
Pulse * :		<input type="text" value="9"/>
1. dial time	[s]	<input type="text" value="14"/>
Dial time	[s]	<input type="text" value="14"/>
Crossing time to failure loop	[s]	<input type="text" value="14"/>
Bad dial key protection	[ms]	<input type="text" value="500"/>
Switching on lock	[ms]	<input type="text" value="3 500"/>
Regime supervisor is valid	[s]	<input type="text" value="60"/>
Ticking after attach	[s]	<input type="text" value="10"/>
Back to forwarder	[s]	<input type="text" value="60"/>
Back to operator	[s]	<input type="text" value="30"/>
End of switching over	[s]	<input type="text" value="60"/>
Ringing of holding CO	[ms]	<input type="text" value="5 000"/>
End of holding	[s]	<input type="text" value="300"/>
Time of back ringing	[s]	<input type="text" value="20"/>
Length of alarm ringing	[s]	<input type="text" value="60"/>
Delay from front	[ms]	<input type="text" value="1 500"/>
Increasing of DTMF resistant for DISA	[ms]	<input type="text" value="70"/>
Increasing of DTMF resistant for VoiceMail [ms]		<input type="text" value="110"/>
Bulk forwarding to VM		<input type="checkbox"/>



2.1.6. Tone parameters

DTMF	
Increasing of DTMF resistant for DISA	70 ms
Increasing of DTMF resistant for VoiceMail	110 ms
Amplitude DTMF L Group	52
Amplitude DTMF H Group	62

Generator 1			
Frequency 1	425	Amplitude 1	62
Frequency 2	0	Amplitude 2	0
Frequency 3	0	Amplitude 3	0

Generator 2			
Frequency 1	350	Amplitude 1	31
Frequency 2	440	Amplitude 2	31
Frequency 3	0	Amplitude 3	0

Voice modules	
Amplitude voice modules	128

DTMF

Increasing of DTMF resistant for DISA. Min. length of the DTMF sign that is accepted in the DISA direct inward calling.

Increasing of DTMF resistant for VMail. Min. length of the DTMF sign that is accepted in VoiceMail.

Amplitude of the DTMF L Group: the size of the DTMF sign's amplitude (as a rule it is not necessary to change it).

Amplitude of the DTMF H Group: the size of the DTMF sign's amplitude (as a rule it is not necessary to change it)

The PBX has two tone generators which can be used as tone sources when setting *Tones*. The tone can be formed from up to three varying frequencies. When forming the tones it is necessary to uphold the rule on the overall size of the amplitude:

-1st Frequency = Amplitude 62

-2nd Frequency = Amplitude 31

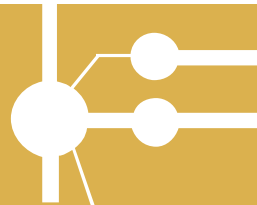
-3rd Frequency = Amplitude 21

Generator 1 (sine 1) -Default frequency 425 Hz.

Generator 2 (sine 2) -Example of forming a "British tone".

Amplitude of the voice modules

The default value is set at 128 and it is not recommended to change it.



2.1.7. Parameters for voicemail

Voicemail a line (or department) to which the modem of a voice system is connected, Audio lines (Kerio VoiceMail) and the ITS voice system lines.

Identification of mailbox selection prefix before the identification sign (the default setting is a pause of 1s).

DTMF for call clear return from being put through (called subscriber is engaged)

Increasing of DTMF resistant for VMail. Min. length of the DTMF sign that is accepted in VoiceMail.

Use protocol ITS permission/prohibition for the voice mail ITS

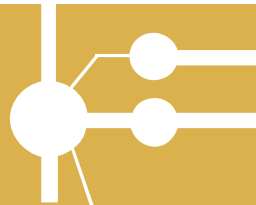
Use protocol 602 permission/prohibition for the voice mail SW602

2.1.8. Authorisation numbers

Tables A, B, C, D, E, F for programming authorisations. Tables A, B, C, D are prohibitive and conversely tables E and F are for exemptions and have greater priority. Every table has 16 rows. Local numbers up to 5 digits can be entered into tables A and B, the rest take ten digits.

Apart from the numbers it is also possible to add the sign "?", which presents all numbers (0-9).

Authorization tables						
	Forbiden			Exceptional		
	A	B	C	D	E	F
1	906	00		601	00421	1
2				602		2
3				603		3
4						4
5						5
6						6
7						7
8						8
9						9
10						
11						
12						
13						
14						
15						
16						



2.1.9. Emergency numbers

A table listing the emergency numbers that the lines can call without authorisation. 15 numbers are available with a maximum of 16 digits.

2.1.10. Passwords

2.1.10.1. The password for users classified as Supervisor

The table for entering the supervisor's password. This password is used, for instance, during the RESET services of the PBX etc.

The user with the **Supervisor** authorisation has access to all parameters in the PBX and can also change passwords for users with the **User** authorisation.

2.1.10.2. The password for users classified as User

The user with the **User** authorisation has the possibility of changing only some of the PBX parameters when programming and can change the password for the user with the **User** authorisation.

All parameters are available for reading.

2.1.11. Bank holidays

A table in which up to 16 annual bank holidays can be entered. The PBX behaves as though it were a Sunday.

2.1.12. Charging

A form for entering the types of calls recorded in the call memory.

The entry **Record incoming numbers** allows a record of the incoming calls to be made in the accounting rows for ports so enabling this. The entry **Record the entire number of private calls** enables the numbers of private calls to be recorded.

Accounting

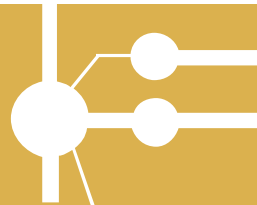
Charge

Incoming	Incoming unserved	Log
<input checked="" type="checkbox"/> Write	<input checked="" type="checkbox"/> Write	<input checked="" type="checkbox"/> Write
<input checked="" type="checkbox"/> Print	<input checked="" type="checkbox"/> Print	<input checked="" type="checkbox"/> Print

Outgoing	Private
<input checked="" type="checkbox"/> Write	<input checked="" type="checkbox"/> Write
<input checked="" type="checkbox"/> Print	<input checked="" type="checkbox"/> Print

Write incoming numbers
 Write whole numbers of private calls

Impuls fee US\$



2.1.13. Tones and ringing

Tones	
Dial tone	
Special dial tone	Gener. sine 1 OZT_MORSE_I
Baby Call tone	Gener. sine 1 OZT_MORSE_K
Network dial tone	Gener. sine 1 OZT_MORSE_A
Busy tones	
Busy tone	Gener. sine 1 OBS_330/330_CZECH
Congestion tone	Gener. sine 1 OBS_160/160_CGT
Not allowed service	Gener. sine 1 OBS_330/670
Ringing from	
IL	Gener. sine 1 RING_MORSE_M
CO	Gener. sine 1 RING_1/4
Waiting	
VL	Gener. sine 1 OBS_330/330_CZECH
SYS	Gener. sine 1 RING_MORSE_N
CO	Aux 1 Permanent tone

In this screen you can change the type of tones and ringing in individual states. The screen is primarily meant for special applications.

It is necessary to select “Tone source” (left part of the table) and “Tone cadence” (right part of the table).

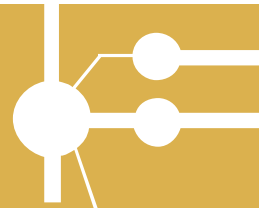
The types of tones (heard in the handset) and ringing (heard on the telephone):

Dialling tone

- Special held calls
- Baby call activate the Baby call/dispatcher regime
- Network dial tone simulated tone when using ARS, call back regime, internal GSM and ISDN in certain cases

Busy tone

- Busy the person called is engaged, the service cannot be provided
- Congestion blocked network (*from an external network* – the line is broken, network is blocked, wrong number no credit; *calling internal network* – telephone broken, full queue, cannot be redirected, reject)



- Not allowed service unauthorised entry (entered an unauthorised service or line, lock, timeout selection, cannot be done)

Ringling from

- An internal line
- The intercom
- An external line
- Call back
- Return from redirection
- Alarm

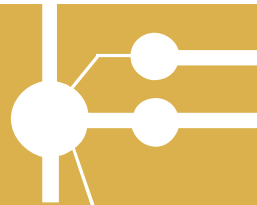
Waiting tone

- VL calling from an internal line
- SYS calling from a system line
- CO calling from an external line

Ticking

- When connecting
- End CO-CO at the end of a call between two external lines there is a ticking before break up

Before entering this screen there is a warning about the possible negative effect operation may have on the PBX after an unprofessional change to the tones.



2.1.14. Voices

Here you can change the voice settings (system, user and music to make waiting more pleasant).

System voices

The PBX contains 11 systems voices. The voices notify the user about being redirected, accepting the service dialed, a more expensive call in the LCR (least cost routing) etc...

In this category there is also “music to make waiting more pleasant – MusicOnHold”.

It is not recommended to make changes to the system voices.

User voices

They are for notifying the caller in DISA.

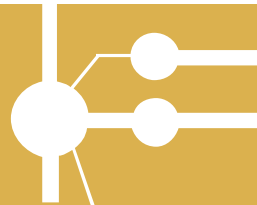
Mess.	File
CONFIRM	SYS01_EN.wav
DON'T CONFIRM	SYS02_EN.wav
W/O AUTHORIZ.	SYS03_EN.wav
NO CO	SYS04_EN.wav
EXPENSIVE	SYS05_EN.wav
FORWARD	SYS06_EN.wav
DON'T DISTURB	SYS07_EN.wav
PASSWORD	SYS08_EN.wav
LOCK	SYS09_EN.wav
ERROR	SYS10_EN.wav
MESSAGE	---
Mess.	File
User1	DISA1_ENG.WAV

After reading the DAT from the PBX this table will display a list of the voices contained in the PBX.

Pressing the key “Load” saves the voices in the “Wav” directory, which are then automatically formed in the root directory of the installed PBX’s configuration tool.

If you are going to make changes in the voices settings it is necessary to first put the voice in this “Wav” directory and then set it here. **A voice** is a type of **wav** and must have the following parameters: **MONO - 8bit - 8kHz**.

The overall capacity of the voices is ca. 3 minutes. The length of the system voices including the music is ca. 40 sec.



Mess

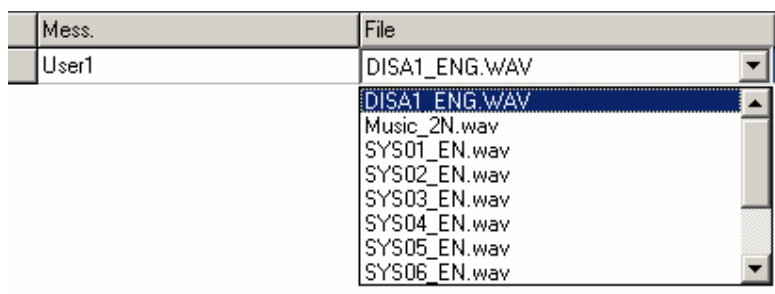
The name of the voice as it is herein presented in the PBX configuration tool (e.g. as a DISA parameter in the ringing table).

File

The name of the voice as it is saved in the PBX.

A change to the original voice

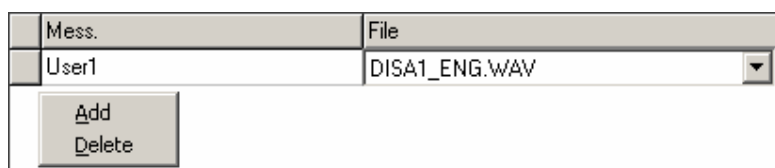
- press the key "Load"
- enter the voice created into the "Wav" directory formed.
- right click with the mouse on the voice you want to change.



- select the voice formed that is saved in the "Wav" directory.
- press the key "Save"

Adding a new voice

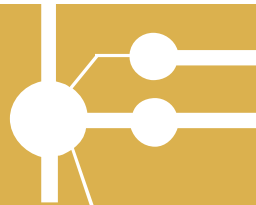
- press the key "Load"
- enter the voice created into the "Wav" directory formed.
- right click with the mouse in the space for user voices.



- select the command "Add"
- select the voice formed that is saved in the "Wav" directory.
- press the key "Save"

2.1.15. Modem

Changes can be made in the internal modem's configuration (depending on the PBX model) for telemonitoring. The basic set up accepts silent running of the modem. The settings are changed by the AT command. The command is accepted after carrying out a RESET.



Permission for **Modem switch for telemonitoring** in the DISA detection is (according to the ringing table) selected (if it is sited) directly in the modem module.

2.2. Internal lines

2.2.1. Numbering

This item offers a list of internal subscribers to the PBX. Here the individual ports are assigned a subscriber number and a name. The name is allowed to up to 14 characters, the numbering is 4 digits at most. Pay attention that no collision with the numbering of services arises.

In the **DDI** column enter the DDI number used when phoning an internal line during DISA, DDI, if it is not set up otherwise in the ringing table.

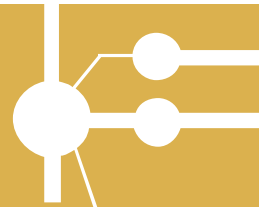
The **Prefix CLIP** column represents the transition sign to the VTS for internal lines that identify an incoming call and for system telephones with at least 05.12 firmware. It enables this equipment to accept call back directly from a list of rejected calls. It can contain up to 4 characters.

The column **Prefix CLIP private** represents the transition sign to a private network (an external line denoted as a private one) for internal lines that identify an incoming call and for system telephones with at least 05.12 firmware. It enables this equipment to accept call back directly from a list of rejected calls. It can contain up to 4 characters.

Internal lines						
Port	Type	Number	DDI	Name	Prefix CLIP	Prefix CLIP private
1	IL	11	11	Office 1	0	
2	IL	12	12	Office 2	0	
3	IL	13	13	Service	0	
4	SYS	14	14	Director	0	
5	SYS	15	15	Secretary	0	
6	SYS	16	16	Reserve	0	
7	SYS	17	17	Reserve	0	

2.2.2. Access to external lines

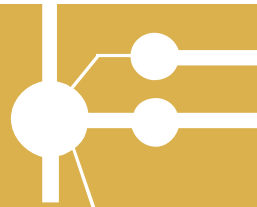
2.2.2.1. Allocating external lines



Trunks assigning			
Line	Prior	Trunk PSTN	Priorita
11	CO1	TRUNK2	255
12	So1	TRUNK4	255
13	GSM1	TRUNK16	255
14	...	TRUNK1	255
15	TRUNK1	255
16	TRUNK1	255
17	TRUNK1	255

This table is for allocating a selection of bundles for external lines to internal lines (analogue and system) subscribers. If an internal subscriber chooses the service **Access to an external line** and the LCR is not activated or they are returning from it because a different, cheaper route was not found, then for calling to the VTS the **priority** external line is first used and if the first choice is not available then the first free external line selected from the bundle. The priority line can even be from a disallowed bundle.

If, for instance, we imagine 4 varying privileged groups of subscribers from the standpoint of their choices for a free external line (ignoring the LCR). The first circuit will be 2 internal lines to the flat of the building administrator, the second circuit to the director with an assistant and a company fax, the third circuit will be 4 traders and the fourth circuit the other employees with the lowest set selection for an external line. In order to meet these requirements we split up the external lines (except external lines allocated to GSM phones) into, for instance, 4 bundles. Bundle 1 has 1 external line – for the building administrator’s flat. External lines 2 and 3 – the directorate – are assigned to bundle 2. The external lines 4 and 5 are in bundle 3 and the last external lines, 6, 7 and 8 are assigned to bundle 7. Afterwards for starting up an external line we can assign the internal links from the administrator’s flat just to bundle 1. Like this no one else can get on this external link. For the director, assistant and fax we assign bundles 2 and 7 for starting up to the VTS. Like this two calls can be made simultaneously from the directorate on the private lines and other calls (faxing, other external conference calls , ...) choose one of the free external lines from the last bundle, 7. Similarly the traders’ lines can be chosen from bundles 3 and 7 for external calls. The other employees can only use the last bundle, 7. In this case bundle 7 not only serves the group “other employees” but also as a reserve for the traders and the directorate with a fax. This selection can be enriched by setting the priorities for the internal and external lines. For the priorities the valid principle is that an internal subscriber must have the same or higher priority than an external line so that it can be assigned to him.



2.2.2.2. Authorisations

Authorization of internal lines									
Line	Tables A - F						Saving automat		
11	<input checked="" type="checkbox"/> A	<input type="checkbox"/> B	<input type="checkbox"/> C	<input type="checkbox"/> D	<input checked="" type="checkbox"/> E	<input type="checkbox"/> F	<input checked="" type="checkbox"/> Use	<input type="checkbox"/> Duty	
12	<input type="checkbox"/> A	<input checked="" type="checkbox"/> B	<input type="checkbox"/> C	<input type="checkbox"/> D	<input type="checkbox"/> E	<input checked="" type="checkbox"/> F	<input checked="" type="checkbox"/> Use	<input type="checkbox"/> Duty	
13	<input type="checkbox"/> A	<input checked="" type="checkbox"/> B	<input type="checkbox"/> C	<input type="checkbox"/> D	<input type="checkbox"/> E	<input checked="" type="checkbox"/> F	<input checked="" type="checkbox"/> Use	<input type="checkbox"/> Duty	
14	<input type="checkbox"/> A	<input type="checkbox"/> B	<input checked="" type="checkbox"/> C	<input type="checkbox"/> D	<input type="checkbox"/> E	<input type="checkbox"/> F	<input checked="" type="checkbox"/> Use	<input type="checkbox"/> Duty	
15	<input checked="" type="checkbox"/> A	<input type="checkbox"/> B	<input type="checkbox"/> C	<input type="checkbox"/> D	<input checked="" type="checkbox"/> E	<input type="checkbox"/> F	<input checked="" type="checkbox"/> Use	<input type="checkbox"/> Duty	
16	<input checked="" type="checkbox"/> A	<input type="checkbox"/> B	<input type="checkbox"/> C	<input type="checkbox"/> D	<input checked="" type="checkbox"/> E	<input type="checkbox"/> F	<input checked="" type="checkbox"/> Use	<input type="checkbox"/> Duty	
17	<input checked="" type="checkbox"/> A	<input type="checkbox"/> B	<input type="checkbox"/> C	<input type="checkbox"/> D	<input checked="" type="checkbox"/> E	<input type="checkbox"/> F	<input checked="" type="checkbox"/> Use	<input type="checkbox"/> Duty	

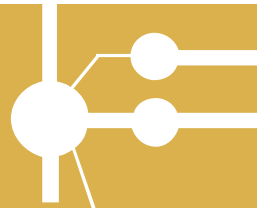
Day

This table sets the authorisations for calling to a public telephone network in particular each internal line for the **DAY** regime, the **NIGHT** regime and **private** calls in an arbitrary regime. Here it is also determined whether a line will obligatorily use the LRC or not and what level of savings for route selection.

If tables A – F are checked, then it means that the given internal subscriber controls the selection to an external network on the agreement of the number called with the values shown in tables A – F. If the number called is in agreement with the number in the prohibition table, the call is ended. If the caller has the prohibition table checked, then they can only call the numbers entered into the table. If the combination and permission tables are combined then the permission table always has preference.

If the choice **Use LCR** is not checked, then after selecting the start up service to an external line the direct free external line is allocated without using alternate routes in the LCR. Without this choice the PBX behaves as standard. If this choice is checked so that after selecting the service start up to an external line no port picks it up, the caller receives a simulated external dialling tone and carries on. After every number called the selection is compared with the numbers in the **Dialling Analysis** table and at the same time the LCR level of the internal subscriber and the dialling analysis are compared. If a route is found then a call is made along it. If the route found is engaged or no alternative route is found at all or the level of the LCR is not in agreement then the call takes place along a standard external line with the announcement “Attention please, this call is more expensive”

Selecting the **Obligatory LCR**. If this box is checked it means the same as in the previous example, that after selecting the start up service to the VTS a



simulated dialling tone is given and the number called is checked to see if it is not the same as a code in the **Dialling Analysis** table. If a number is dialled that is not in the **Route Analysis** then a connection is made through a standard external link. If agreement is found and the route is free, then the call is made along this route. In the event that the route is engaged, the caller is not allowed to make the call and receives the engaged tone or an announcement that the connection failed.

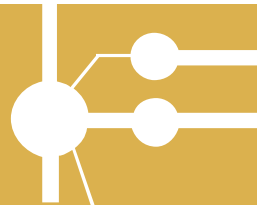
The selection **Mask for Dialling Analysis – Level of Saving**. Here up to 4 levels of saving. The individual rows in the **Dialling Analysis** also have 4 boxes for ticking the level of saving. So that the internal subscriber can get to the **Dialling Analysis**, they must have at least one box ticked for the level of saving in agreement with the row in the **Dialling Analysis**.

Note:

- *Setting the authorisations is independent of the LCR.*
- *The selection **Obligatory LCR** must be selected at the same time as **Use LCR**.*

Example 1: The subscriber is not allowed to call abroad. Then table B is ticked in which only one row is filled in with the value “00”. The other boxes are not ticked. Thus if they use “00” as the transfer sign to the international network then the call is ended.

Example 2: The subscriber is allowed restricted external calls, they are not allowed 906, they can only get to GSM Paegas through the GSM phoning module. Then they have Tables A and B ticked, in which only rows are filled in with “00” and “906” and they also have the boxes **Use LCR** and **Obligatory LCR** ticked. At the same time we assume that they have the first of the four savings levels ticked and the row **Analysis of Savings** is also ticked at the first of the four levels. After dialling 603 it is found that there is agreement with a route though GSM and if the route is free then the call is made. The route analysis is filled in so that in one row there is the code 603 followed, for instance, by the number for route 1. Thus the route number is programmed as to which bundle is used and the entries for adding and removing numbers are left free (see programming the LCR). If the GSM route is engaged, then, because the subscriber has the LCR set as obligatory, they hear the engaged tone and will have to call later.



2.2.2.3. Mask for dialling analysis

Line	Mask of dial analysis			
11	<input checked="" type="checkbox"/> 1	<input checked="" type="checkbox"/> 2	<input checked="" type="checkbox"/> 3	<input checked="" type="checkbox"/> 4
12	<input checked="" type="checkbox"/> 1	<input checked="" type="checkbox"/> 2	<input checked="" type="checkbox"/> 3	<input checked="" type="checkbox"/> 4
13	<input checked="" type="checkbox"/> 1	<input checked="" type="checkbox"/> 2	<input checked="" type="checkbox"/> 3	<input checked="" type="checkbox"/> 4
14	<input checked="" type="checkbox"/> 1	<input checked="" type="checkbox"/> 2	<input checked="" type="checkbox"/> 3	<input checked="" type="checkbox"/> 4

This serves to set up one to four levels of saving for individual internal lines after the service *Dialling to the VTS*. Details in chapter *LCR/Level of Saving*.

2.2.3. Permitting services

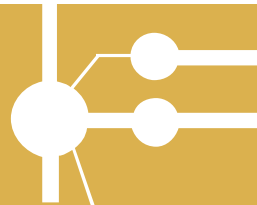
In this table it is possible to allow or disallow each internal line an individual service.

In group C it is possible to set three types of levels:

- **connection level** - for connecting to a call (default service = to call #0). A line that is at a lower or equal level can be connected to. The level has values from 0 – 15. The default level is 0, no one can call anybody.

- **call level** – for calling between internal lines. A line that is at a lower or equal level can be called. The level has values from 0 – 15. The default level is 0, everybody can call everyone.

- **the level in the department** – determines the ranking of lines to the departments. The lines to the departments are ranked from the highest levels to the lowest. This service is only tied in to automatic logging in to the department using the DSS key on the system phone. If the department is created by hand using the PBX configuration instrument then this service is not paid heed. The level has values from 0 – 15. The default level is 0.



Internal lines - Services C			
Line	Enable	Enable	
11	<input checked="" type="checkbox"/> Alarm	<input checked="" type="checkbox"/> Hold	Breaking into level
	<input checked="" type="checkbox"/> Meeting confer.	<input checked="" type="checkbox"/> Switch over	0
	<input checked="" type="checkbox"/> Autoconference	<input checked="" type="checkbox"/> Park	Calling level
	<input checked="" type="checkbox"/> Private calls	<input checked="" type="checkbox"/> Alternate	0
	<input checked="" type="checkbox"/> Accession	<input checked="" type="checkbox"/> Backcall	Level in dep.
	<input checked="" type="checkbox"/> Accounting code	<input checked="" type="checkbox"/> Conference	0
	<input checked="" type="checkbox"/> Syst.short dials	<input checked="" type="checkbox"/> Warn	
	<input checked="" type="checkbox"/> Fill short dials	<input checked="" type="checkbox"/> Spy	

The permission to receive CLIP on an analogue telephone is carried out in the marker activation.

- **CLIP function** – by setting this CLIP will be displayed on analogue telephone (if the analogue telephone's connection allows this).

- **CLIP function without clinking** – in certain cases (wireless phones, MICROCOM, TOPCOM,..) to receive CLIP it is necessary to set the option of without ringing. This suppresses the first ringing and the accepted CLIP is displayed on the second ring.

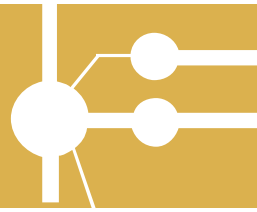
- **DTMF** – setting this means the identification of the calling CLIP is sent using DTMF.

- **FSK** - setting this means the identification of the calling CLIP is sent using FSK (the majority of telephones with the CLIP display option support it)

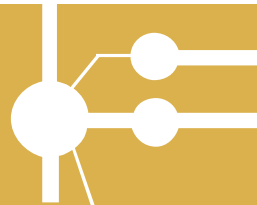
If the telephone is connected with the BT CLIP standard then it is necessary to allow the **BT FSK** setting.

Internal lines - Services activation			
Line	Warn from	Selective activation	
11	<input checked="" type="checkbox"/> Internal lines	<input type="checkbox"/> Reverse	
	<input checked="" type="checkbox"/> Operator	<input type="checkbox"/> Function CALLER ID	
	<input checked="" type="checkbox"/> External lines	<input type="checkbox"/> Function CLIP w/o clinking	
	<input checked="" type="checkbox"/> Return	<input type="checkbox"/> DTMF	
	<input checked="" type="checkbox"/> Manual	<input checked="" type="checkbox"/> FSK	
	<input checked="" type="checkbox"/> Dial end	<input type="checkbox"/> British Telecom FSK	
	<input checked="" type="checkbox"/> Ring circular	<input type="checkbox"/> Pulse dial	
	<input checked="" type="checkbox"/> Possible to take over ringing	<input checked="" type="checkbox"/> Forward busy in daytime	
		<input type="checkbox"/> Forward not present in daytime	Oper.
		<input type="checkbox"/> Forwarding all day	
		<input type="checkbox"/> Forward busy at night	
		<input type="checkbox"/> Forward not present at night	Oper.
		<input checked="" type="checkbox"/> Forwarding all night	
		<input type="checkbox"/> Connect DTMF transmitter	
		<input type="checkbox"/> Connect DTMF receiver	

2N[®] - OMEGA Lite Configuration instrument



Attention: On lines defined as fax, modem or intercom call notifications and peeping, peeping after the call to an external network has ended and round calls is not automatically banned. It is necessary to set it up for each individual line separately.



2.2.4. Departments

These tables are used during the **Call** Department service. In all there are 8 tables with 56 fields available.

2.2.5. Allocating to a group and a department

The table serves to allocate individual internal subscribers to one of two groups for the purpose of switching from the DAY and NIGHT regimes. One subscriber cannot be in more than one group. At the same time this is where individual internal subscribers are allocated to one of eight departments for sorting ringing. One subscriber can be in more than one department simultaneously.

2.2.6. Calling to a department

If an internal line is using the call a department service, then the call either only starts on the first free internal line or at the entire department depending on which group the line belongs to and whether the given department has checked the parameter **Call to the entire department**.

2.2.7. Global data

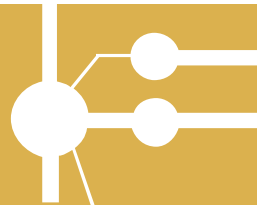
See *Global data / internal lines*

2.2.8. FLASH settings and the type of dialling

Internal lines - Flash setup				
Line	Minimum flash length [ms]	Maximum flash length [ms]	Ukončení Flash [ms]	
11	40	150	0	<input type="checkbox"/> Pulse dial
12	40	150	0	<input type="checkbox"/> Pulse dial
13	40	150	0	<input type="checkbox"/> Pulse dial
14	40	150	0	<input type="checkbox"/> Pulse dial

The table is used for setting the minimum and maximum length of the FLASH on the analogue internal lines. FLASH detection is carried out by windows. A FLASH signal is only considered to be a disruption to the current by the subscriber loop that corresponds to the time set in the minimum and maximum length of the FLASH. By right clicking on the box with FLASH values it is possible to set the same value in the remaining boxes in the column.

The field “End Flash” is used when it is necessary to detect a break in the connection to an analogue CO-VL division. The connected analogue CO line must



be modified for detecting a break in the connection using a disruption in the current loop.

If the box **Pulse** dialling is not ticked then it only accepts tone dialling.

2.2.9. Allow direct dialling to bundles

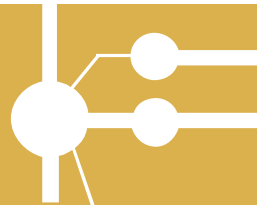
This table is used to disable the service of direct dialling to a bundle. The internal subscriber is only allowed the service to the bundles that they have ticked.

2.2.10. Work and private MSN

Every internal line can be allocated to a different MSN for work and private calls. This means that during the regular settlement of costs for the operator's network costs can be divided up by the individual MSN.

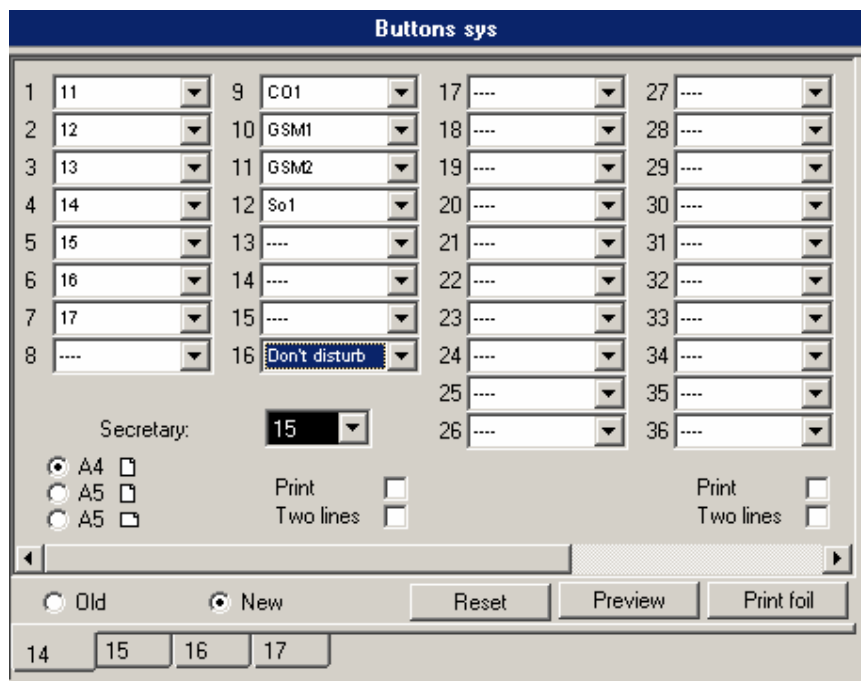
2.2.11. Operating parameters

See *Operating data / Internal lines*



2.3. System lines

2.3.1. Buttons



This item allows 20 light buttons to be set for the older type of system phones and up to 56 light buttons for the new type of system phones including the secretary button.

Under this button it is possible to choose from the MENU the:

- ports for internal lines
- the ports for external lines
- personal fast dialling
- selected services

Personal fast dialling is entered using the following rules:

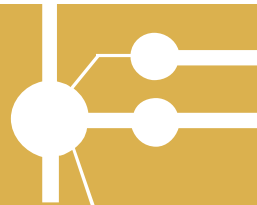
Button 1: possible to enter personal fast dialling 1, or 57 (1 + 56) or an arbitrary fast dialling in the range 81-112.

Button 2: possible to enter personal fast dialling 2, or 58 (2+56), or an arbitrary fast dialling in the range 81-112.

etc.

On a system phone the possible choices under the buttons can be called up by directly pressing the pertinent button and then by using the double-press button *MENU (button book)* and afterwards the pertinent light button. In this manner it is possible to dial all 112 personal fast dialling.

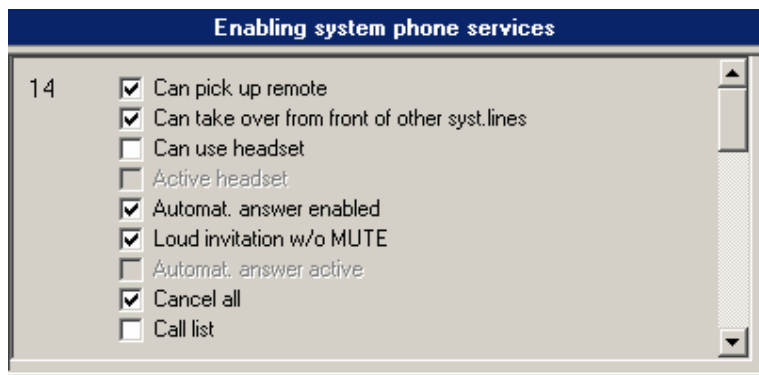
The sequencing is the following: - fast dialling 1-56 is automatically entered for the double-press dialling



- fast dialling 57-112 is meant for direct dialling by pressing the button (if it is ranked under the button).

It is possible to immediately print a description of the buttons from the environment of the buttons' set up for each of the new system telephones.

2.3.2. Allowing services



This is where the permission for certain services on the pertinent system phones is done.

- **Can pick up remote** – remote answering is allowed with the voice call service. The speaker of a loud telephone is activated and the microphone is muted.

- **Loud invitation without MUTE** – a similar function as *remote* answering but activated by the microphone.

- **Can take over from front of other system lines** – by pressing a light button it is possible to take over a queued call from another system telephone.

- **Cancel call** through the permission it is possible to refuse a call to an independently ringing system telephone by pressing the Cancel button and then no longer continuing in the ringing table.

- **Call list** by allowing this it enables a printout of the calls to be made. We recommend prohibiting this for system phones that do not support this function (necessary to have at least the 05,12 version of the system phone).

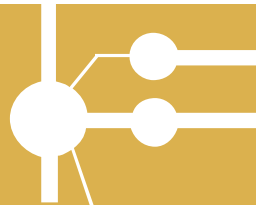
- **Can use the headset** this permission enables the “Speaker” (loud telephone/headset) function to be controlled through the MENU bar when the headset is connected.

- **Automatic answer enabled** when activated by the button on the system telephone it enables automatic answering using the “loud telephone” during an incoming call.

2.4. Virtual lines

2.4.1. Numbering the virtual lines

This item contains a list of the PBX's virtual lines. The virtual line is an extension that does not exist physically. On its account the authorisation, ARS and other parameters can be set for an outgoing call.



A **subscriber number** is allocated to individual ports and can be up to four digits with a four digit **PIN**, used to identify a virtual line. Attention - a collision with the numbering of the other lines and services must not arise.
By right clicking the mouse the ports can be automatically numbered.

Virtual ports numbers		
Port	Number	Password
1	501	xxxx
2	502	xxxx
3	503	xxxx
4	504	xxxx

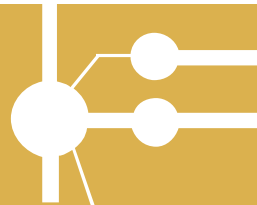
2.4.2. Direct selection on the bundles allowed
The same set up and intent as with physical lines.

2.4.3. Tariff credit
The same set up and intent as with physical lines.

2.4.4. Authorisation
The same set up and intent as with physical lines except that here only private authorisations can be set up. It does not distinguish the DAY/NIGHT regime.

2.4.5. Allocating a bundle
The same set up and intent as with physical lines except that here only allocating the bundle is set up.

2.4.6. Mask for dialling analysis
The same set up and intent as with physical lines.



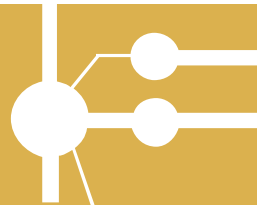
2.5. External lines

2.5.1. Types of lines

In this table the properties of the individual lines for the analogue external lines is set up

Analogue external line

- **Name** – a maximum 14-character name for the external line
- **Series** – only an incoming external line which has not been tested for correct working and cannot be entered upon in the outgoing direction
- **16 kHz** – an external line with a 16 kHz impulse receiver
- **Private** – a line connected to a private network, which is not charged.
- **Without authorisation** – on this line a check of authorisation is not made
- **Test CPT**. A test for the dialling tone on the external line
- **Current test**. The other option is to test the line current when answering
- **Prefix**- a 4-digit prefix, which is automatically chosen as the first (DID through a superior PBX) after engaging a line. The prefix is not recorded in the charging row.
- **Dialling** – setting the type of dialling for an external line
- **Announcement tone length**– determines how long it must detect an external dialling tone so that it can designate the line as working. If the value “0” is set then the tone is never checked and this line will thus never report a fault.
- **Time to dial startup** determines the minimum time for dialling to be started after the external dialling tone has been detected
- **Min time for accouting** – the period deducted from the call time for temporary charging
- **Priority** – an internal line must have higher or the same priority so that it can use this external line.



2.5.2. Types of digital lines

S₀ line

Digital line types						
Line	Name	Options	Ringing tabs			
			MSN	Day	Night	Main group
ISDN line		<input type="checkbox"/> DDI <input type="checkbox"/> All MSN <input type="checkbox"/> Block Out <input type="checkbox"/> Auto TEI <input type="checkbox"/> Without autoriz. <input type="checkbox"/> Private <input type="checkbox"/> Receive overlap dial <input type="checkbox"/> Send CLIP <input checked="" type="checkbox"/> Synchron.PBX time <input type="checkbox"/> Fax line	MSN1 222333441	Tab.1	Tab.1	Group 1
			MSN2 222333442	Tab.2	Tab.1	Group 1
			MSN3 222333443	Tab.3	Tab.1	Group 1
			MSN4	Tab.1	Tab.1	Group 1
			MSN5	Tab.1	Tab.1	Group 1
			MSN6	Tab.1	Tab.1	Group 1
			MSN7	Tab.1	Tab.1	Group 1
			MSN8	Tab.1	Tab.1	Group 1

Prefix:

Min.time for accounting [s]:

Priority:

2. layer deactivation: [ms]

So1

Digital line types						
Line	Name	Options	Ringing tabs			
			Serie	Day	Night	Main group
ISDN line		<input checked="" type="checkbox"/> DDI <input type="checkbox"/> Configuration MPT <input type="checkbox"/> Block Out <input type="text" value="0"/> Auto TEI <input type="checkbox"/> Without autoriz. <input type="checkbox"/> Private <input type="checkbox"/> Receive overlap dial <input type="checkbox"/> Send CLIP <input checked="" type="checkbox"/> Synchron.PBX time <input type="checkbox"/> Fax line	Serie1 2223334	Tab.1	Tab.1	Group 1
			Serie2	Tab.1	Tab.1	Group 1
			Serie3	Tab.1	Tab.1	Group 1
			Serie4	Tab.1	Tab.1	Group 1
			Serie5	Tab.1	Tab.1	Group 1
			Serie6	Tab.1	Tab.1	Group 1
			Serie7	Tab.1	Tab.1	Group 1
			Serie8	Tab.1	Tab.1	Group 1

Prefix:

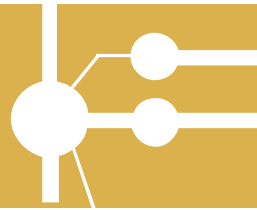
Min.time for accounting [s]:

Priority:

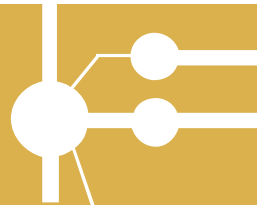
2. layer deactivation: [ms]

So1

- **Name** - a maximum 14-character name for the external line
- **DDI** – ISDN line in the **PTP** connection
- **MPT configuration** – enables NT1+ analogue telephone equipment to be connected to an ISDN line with a DID.
- **All MSN** – reacts to all incoming numbers by a ringing set on the **MSN1**



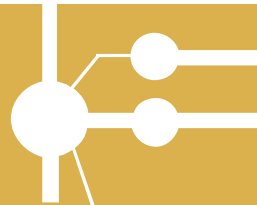
- **Block Out** – only an incoming external line and it cannot be entered on in the outgoing direction
- **Auto TEI**
- **Without authorisation** – checks on authorisation not made on this line
- **Private** – a line connected to a private network to which charging is not done
- **Receive overlap dialling** – only for special PTMP applications
- **Send CLIP** – it is possible to forward the caller's CLIP to a private ISDN line.
- **Synchronising PBX time** – during an outgoing call the PBX time is synchronised with the ISDN operator's time (if the operator provides this)
- **Fax line** – labelling an ISDN fax line. Calling is with 3.1 audio signalling.
- **Prefix-** a 4-digit prefix, which is automatically chosen as the first (DID through a superior PBX) after engaging a line. The prefix is not recorded in the charging row.
- **Min. time for accouting** – the period deducted from the call time for temporary charging
- **Priority** – an internal line must have higher or the same priority so that it can use this external line.
- **Series₁₋₈** – fill in the series number or numbers (incoming series number without DID numbers or leave the series empty – if the ISDN network operator only sends a DID number, for precise information ask the operator of the ISDN network)
- **MSN** – the line in the **PTMP** connection
- **MSN₁₋₈** – fill in the **MSN** number 1 to 8
- **Main group** – dividing up the MSN numbers into two groups for the option of switching to the DAY/NIGHT regime and other functions related to group 1 / 2.
- **Deactivating 2nd layer** – by authorising it deactivates the second ISDN layer after setting the time.



GSM line

Line	Name	Options
	GSM gateway	<input type="checkbox"/> Serie <input type="checkbox"/> Private <input type="checkbox"/> Without autoriz. <input type="checkbox"/> Roaming enabled <input checked="" type="checkbox"/> Receive SMS <input checked="" type="checkbox"/> Send SMS
		PIN: <input type="text"/>
		Min.time for accounting [s] <input type="text" value="1"/>
	CLIR selection	<input type="text" value="Belong operator"/>
	Prefix	<input type="text"/>
	Priority	<input type="text" value="0"/>

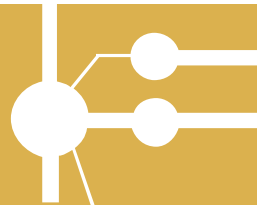
- **Name** - a maximum 14-character name for the external line
- **Series** – only an incoming external line which is not tested for correct working and cannot be entered upon in the outgoing direction
- **Private** – a line connected to a private network, which is not charged
- **Without authorisation** – checks on authorisation not made on this line
- **Roaming enabled** – allowing roaming on the GSM port
- **Receive SMS** – allowing SMS to be accepted
- **Send SMS** – allowing SMS to be sent
- **CLIR selection** – a choice of sending identification – by operator
 - hide number
 - show number
- **Prefix**- a 4-digit prefix, which is automatically chosen as the first (DID through a superior PBX) after engaging a line. The prefix is not recorded in the charging row.
- **Min. time for accouting** – the period deducted from the call time for temporary charging
- **Priority** – an internal line must have higher or the same priority so that it can use this external line.
- **PIN** – a four digit code for accessing SIM cards



VoIP

Digital line types			
Line	Name	Options	Ringings tabs
So1	VoIP gate	<input type="checkbox"/> Without autoriz. <input type="checkbox"/> Private	
		Min.time for accounting [s]	1
	Prefix		CLIP 811
	Priority	0	Strip 3
			Dial to VoIP [s] 2,5

- **Name** – line name of max. 14 characters
- **Without autoriz.** – the authorisation check will not be performed on this line
- **Private** – line connected to the private network, no accounting is performed
- **Prefix** – prefix of up to four digits, which will be automatically called after outgoing occupation of the line as the first (DIN via the superior central). Prefix is not recorded into the accounting line.
- **Minimum time for accounting** – time subtracted from the call time for pseudo-accounting.
- **Priority** – internal line must be of higher priority to use the external line.
- **CLIP** – enter, how should the line be identified in the outgoing direction
- **Strip** – enter number of digits from the incoming identification, which should be subtracted in the input direction in order that the remaining digits are the DIN to the participant of DIN to the ringing table.
- **Dial to VoIP** – maximal period for delay of the next selection into the VoIP line. The time survey is reset after each obtained digit from the internal participant and after its expiring, the dialling mode is changed to the call mode. If it is activated, the expiring of the period and end of the dialling is announced by a short beep. Any other dialling is considered a service into the call.



2.5.3. Trunks

Trunks					
	TRUNK1	TRUNK2	TRUNK3	TRUNK4	TRUNK5
1	CO1	GSM1	So1
2	So1	GSM2	So1L1
3
4
5

Cyclic Cyclic Cyclic Cyclic Cyclic

The table serves for allocating individual external lines to a bundle. The maximum number of external lines in the bundle is **24**. There are 16 bundles. Every external line may be in one or more bundles at once. The first eight bundles can use the service **Internal call through a bundle**. A cyclic start up for an external line can be used in the bundle.

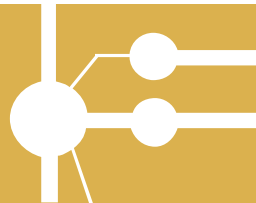
2.5.4. Trunks for accessing ringing

The table serves to allocate individual external lines to a bundle for using the service **accessing ringing from a bundle**. Every external line can be in one or more bundles at once.

2.5.5. Ringing

For every external line you can set up the same or a different ringing table for the DAY and NIGHT regime. The tables are general and the same table can be used for various ports.

- **DISA** – when setting it is possible to call the DTMF by selecting an internal subscriber
- **Internal numbering plan** – a number received during DISA DID will be compared with the subscribers' internal numbering
- **DDI numbering plan** – the number during DISA DID will be compared with the subscribers' DID numbering
- **FAX** – when using the DISA command in the ringing table the fax 1100Hz introductory tone will be detected
- **Modem** – when using the DISA command in the ringing table the modem 1300Hz introductory tone will be detected



Here you can select where the DISA is entered in the ringing table, so that after an incoming ringing on an external line it takes into account FAX or Modem tone in the DTMF selection and connects to the declared internal line in accordance.

Ringing from external lines can elicit a maximum of 500 events.

Incoming traffic in CO lines

Day

Night

Tab.4

- DISA
- Intern. numb. plan
- DDI. number. plan
- FAX
- Modem

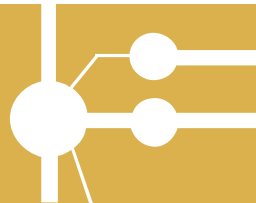
	Action	Par.
1	Ring IL	11
2	Wait	15
3	Ring IL	12
4	Ring IL without queue	11
5	Wait	15
6	Ring IL	14
7	Wait	0
8	Hang up	-

Tab.1

- DISA
- Intern. numb. plan
- DDI. number. plan
- FAX
- Modem

	Action	Par.
1	Ring accessible	-
2	Ring operator	-
3	Wait	0
4	Hang up	-

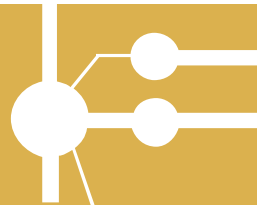
External 1 **GSM1** GSM2 So1



2.5.6. Ringing table

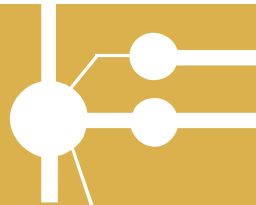
One of the following actions can be programmed in each row:

Action	Parameter	Description
Ring VL	VL number or SYS	Ringing for a specific number
Ring VL without a queue	VL number or SYS	Ringing for a specific number. If engaged then it does not form a queue. If only one ringing then it rings on.
Ring VL without a queue or jump	VL number or SYS	Ringing for a specific number. If engaged then it does not form a queue and carries out the command two rows below.
Ring VL without a queue and jump	VL number or SYS	Ringing for a specific number and jumps two rows down. If engaged then no queue formed and carries on in the ringing table.
Ring VL and set for voicemail	VL number or SYS	Ringing for a specific number and thus identifying itself even in a voice system (if the ringing is forwarded).
Don't ring VL	VL number or SYS	Ends ringing to a specific number.
Ring accessible	None	Ringing accessible internal and system lines
Ring accessible cyclically	None	Cyclic ringing accessible internal and system lines
Ring accessible linearly	None	Ringing the first of the accessible internal and system lines
Ring accessible cyclically no queuing	None	Cyclic ringing accessible internal and system lines. If it is engaged then it does not form a queue. If only one ringing then it rings on.
Ring accessible linearly no queuing	None	Ringing the first free accessible internal system line. If it is engaged then it does not form a queue. If only one ringing then it rings on.
Ring dept. linear.	Departments 1 to 8	Rings first free number from the department
Ring dept. cyclic.	Departments 1 to 8	Cyclically rings first free number from the department
Ring entire dept.	Departments 1 to 8	Rings entire department
Ring dept. linear. without queue or jump	Departments 1 to 8	Rings first free number from the department. If internal lines engaged then it does not form a queue and carries out the command two rows down.
Ring dept. cyclic. without queue or jump	Departments 1 to 8	Rings another free line from the department. If internal lines engaged then it does not form a queue and carries out the command two rows down.
Ring entire dept. without queue or jump	Departments 1 to 8	Rings entire department. If internal lines engaged then it does not form a queue and carries out the command two rows down
Ring operator	None	Rings the operator
Ring voicemail	VL number or SYS	Rings the voice mailbox given by the parameter
Action	Parameter	Description
Don't ring	None	End all ringing
Wait	Time - from 1 to 999 [s]	Wait for the set length of time, 0 = unlimited wait



		or until the incoming ringing from an external line
DISA	Number of voice from 1 to 10 = 0 Or nothing	Stops previous ringing to internal lines and takes an external line to wait for a fax or modem call or DTMF number
DISA End	None	Ends dialling detection
Voice	Number of voice from 1 to 9	Plays the voice
Select tone	A selection of tones	After lifting an external line with the DISA service activated a different tone can be imposed (for special applications)
Table	Number of ringing table	Ringing tables can be catenated
Automatic operator	Automatic operator's number 0-8	Rings a given automatic operator voice system. If module not working then it carries on with next row in table.
Connect remote access	None	Rings the remote access modem in the PBX. If the module is not installed then it carries on with next row in table.
Transit DID	VL, SYS number or virtual	Carries out a start up on the bundle for outgoing lines to the VTS by parameter. This allows an outgoing call to be made from within the PBX on the line account given by the parameter.
Call fast dialling	The number or name of the joint fast dialling	After an incoming external call it dials the given fast dialling. Which line the call will be charged to and which lines it will go to the VTS is determined in the settings External lines/Identification for transit calls.
Hang up	None	Hangs up on an external line and ends all actions. It is in the last row and cannot be removed.

Attention: The total number of rows in all of the ringing tables cannot exceed 500.



Here are some working examples for illustration.

Example 1: During incoming ringing it has to concurrently ring lines 13, 14, 15 and 16 and all lines that have ringing from external lines accessible. All lines ring at the same time until one of them takes the call or the call ends externally.

Action	Parameter
Call accessible lines	
Call VL	13
Call VL	14
Call VL	15
Call VL	16
Wait	0

Tab. 1

Example 2: During incoming ringing it starts ringing line 12, after 10 secs it stops on line 12 and starts on line 14. After another 5 secs it transfers ringing to lines 13 and 15. Then all 3 lines ring until one of them takes the call or the call ends externally. Of course it must ring the accessible line first.

Action	Parameter
Call accessible lines	
Call VL	12
Wait	10
Don't call	12
Call VL	14
Wait	5
Call VL	13
Call VL	15
Wait	0

Tab. 2

Example 3: During incoming ringing it rings the group linearly. Again we bear in mind the lines that have ringing from external lines accessible.

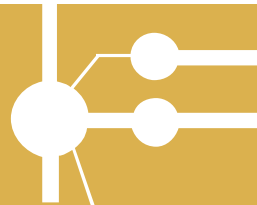
Action	Parameter
Call accessible lines	
Call dept. linearly	5
Wait	0

Tab. 3

Example 4: During an incoming call it rings group 3 cyclically. Accessible lines don't ring. If, after 60 secs, no one answers it ends on the voice mail of subscriber 11.

Action	Parameter
Call dept. cyclic	3
Wait	60
Don't call	
Call voicemail	11
Wait	0

Tab. 4



Example 5: During an incoming call after 4 secs the external line is picked up, it waits for the DISA or fax dial tone with the voice signal number 1. After it subsides it waits another 6 secs and if the DID does not come then it rings for 20 secs on lines 12 and 13. Afterwards it forwards the call to the operator and if no one takes the call after 30 secs it records voice 3 (e.g. you will be connected to the answer phone), it connects to the answer phone on line 19 and if the answer phone does not accept the call then it hangs up after 90 secs.

Action	Parameter
Wait	4
DISA	1
Wait	6
DISA End	
Call VL	12
Call VL	13
Wait	20
Call operator	
Wait	30
Don't call	
Voice	3
Call voicemail	11
Wait	90
Hang up	

Tab. 5

Example 6: Delayed DISA. During an incoming ringing it rings for 20 secs on the accessible lines and line 19. If no one picks it up, then it picks up the external line then it awaits the DISA or fax DID with the voice signal number 1. After the signal subsides it waits 6 secs and if a DID does not come in that time it rings line 12 and the operator for 30 secs. If no one takes the call in this time it plays voice 2 to the subscriber and hangs up.

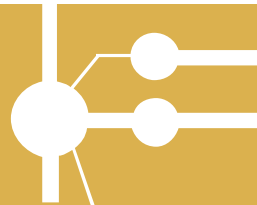
Action	Parameter
Call accessible lines	
Call VL	19
Wait	20
DISA	1
Wait	6
DISA End	
Call VL	12
Call operator	
Wait	30
Don't call	
Voice	2
Hang up	

Tab. 6

Example 7: Using CLIP support, ringing from an external line is directed to internal line 15. The time it rings on line 15 is not influenced by the ringing table and is controlled by the settings in line 15. For this case it is most important to prearrange the command Wait with the parameter 2 secs before the actual command Call VL with the parameter 15.

Action	Parameter
Wait	2
Call VL	15
Wait	0
Hang up	

Tab. 7



IMPORTANT!!

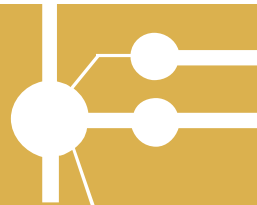
When using the DISA services in the ringing table then the row Wait 0 is not allowed to occur !

2.5.7. Global data

see Global data for external lines.

2.5.8. Groups and switching

Here external lines are allocated to one of the two main groups depending on which decides whether it is the DAY or NIGHT regime and according to this a ringing table is selected.



2.6. Saving automat

After dialling the service “access to an external line” none of the external lines are activated. For lines that use the LCR, the PBX simulates an external dialling tone and awaits the next number dialled. According to an analysis of the next number dialled the PBX determines the connection and carries out the connection. For an internal subscriber entry to the LCR is obligatory, possible or prohibited (as determined in the Authorisations Table). At the same time it is possible to use up to 4 analysis masks and these being in combinations that allow or block the analysis of dialling depending on the individual rows of the **Dialling Analysis** table.

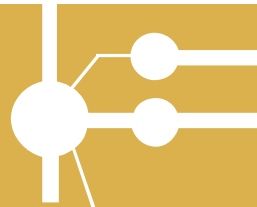
2.6.1. Dialling analysis

Saving automat - Selection analysis						
N.	Mask of dial analysis	Mask of service Ars	Number	Track	Interpretation	
1	<input checked="" type="checkbox"/> 1 <input checked="" type="checkbox"/> 2 <input type="checkbox"/> 3 <input type="checkbox"/> 4	<input type="checkbox"/> 1 <input type="checkbox"/> 2 <input type="checkbox"/> 3 <input type="checkbox"/> 4	601	0	601	
2	<input type="checkbox"/> 1 <input type="checkbox"/> 2 <input checked="" type="checkbox"/> 3 <input checked="" type="checkbox"/> 4	<input type="checkbox"/> 1 <input type="checkbox"/> 2 <input type="checkbox"/> 3 <input type="checkbox"/> 4	602	0	602	
3	<input checked="" type="checkbox"/> 1 <input type="checkbox"/> 2 <input type="checkbox"/> 3 <input type="checkbox"/> 4	<input type="checkbox"/> 1 <input type="checkbox"/> 2 <input type="checkbox"/> 3 <input type="checkbox"/> 4	603	0	603	
4	<input type="checkbox"/> 1 <input checked="" type="checkbox"/> 2 <input checked="" type="checkbox"/> 3 <input type="checkbox"/> 4	<input type="checkbox"/> 1 <input type="checkbox"/> 2 <input type="checkbox"/> 3 <input type="checkbox"/> 4	2	1	8001112222	
5	<input type="checkbox"/> 1 <input type="checkbox"/> 2 <input type="checkbox"/> 3 <input type="checkbox"/> 4	<input checked="" type="checkbox"/> 1 <input checked="" type="checkbox"/> 2 <input type="checkbox"/> 3 <input type="checkbox"/> 4	3	1	8001112223	
6	<input type="checkbox"/> 1 <input type="checkbox"/> 2 <input type="checkbox"/> 3 <input type="checkbox"/> 4	<input type="checkbox"/> 1 <input type="checkbox"/> 2 <input checked="" type="checkbox"/> 3 <input checked="" type="checkbox"/> 4	4	1	8001112224	

In the rows of this table the number dialled to an external network from a subscriber who has ticked the choice **Use the LCR** is compared with the numbers entered here. This comparison eliminates the rows that are not in agreement in at least one of the four masks for dialling analysis for an internal subscriber and the **Rows of the dialling analysis**. The result is a route number (routes ranging from 0 – 150), though which the outgoing call will be dispatched.

In the table rows it is also possible to set up a mask for choosing the **ARS 1-4** service. These services are primarily used for access to private networks.

The next chapter gives some illustrative examples.



telephony, we can determine that this Brno number uses, of instance, **route 1**, which also goes through a **GSM** module and totally replaces the number dialled with the GSM number of your branch.

Here it is predetermined that the number uses **route 1. Bundle 5** (an external line with the GSM telephony module) also uses this, but here it is necessary to **take away** all **8** numbers (in the box **Subtract** the number 8 is entered) and **replace** them with, for example, the number **0603234567** (this number will be entered in the column **Add**), because this number is the number of the module for the GSM telephony of your Brno branch. This again gives a cheaper connection from Prague to Brno than through the land line network.

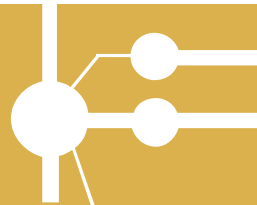
Example 3: Imagine that the fax line also uses the LCR, but because faxes can't be sent through GSM, it is necessary to prevent this. This can be done, for instance, such that the fax line will have a different dialling analysis mask ticked than the row with the number of the Brno branch, which alternates the connection through GSM. Thus we achieve a state in which the fax line cannot "find" a cheaper exit for the Brno branch and returns from the LCR to make the connection through the standard public network.

2.6.3. Dialling analysis mask

This serves to limit combing through all the rows when calling with the LCR. The **Route Analysis** row will only be searched through if the dialling analysis mask is also ticked for an internal line that is seeking a cheaper route.

Example 1: Two modules for GSM telephony with the operator EuroTel are installed in the PBX. One belongs to one firm the other to another. In the **Route Analysis** table one row will be entered with the number 602 aiming at bundle 5 (the first module for GSM telephony) and, for example, the dialling analysis mask has 3 ticked. Another row will also have the number 0602 entered but be directed to bundle 6 (the other module for GSM telephony) and the mask will have 4. Afterwards the internal subscribers of the first firm must have mask number three ticked and they are not allowed to tick mask 4. In contrast subscribers in the other firm must have the number 4 ticked in the dialling analysis mask and are not allowed to tick 3. This ensures that each firm will only go through its module for GSM telephony and it won't contain the neighbour's. It is also possible for the director to have both 3 and 4 ticked for the dialling analysis mask on his lines, which for an outgoing call to GSM EuroTel broadens the opportunity of entering both modules for GSM telephony. And why not when the PBX can charge these calls separately for internal subscribers.

Example 2: With the help of the LCR the PBX can save not only money but also time. Imagine a certain department of people that are allowed to call an external network for work on numbers (DID) that are often repeated. The DID of the affiliated branches will be entered in the LCR's **Route Analysis** rows, and these calls will have the route with the largest available amount of external lines in the bundle or bundles. If we set the internal lines of this department so that for a normal outgoing call (not through the LCR) then they will only have one bundle that doesn't have many external lines and they have the **Use LCR** ticked, then the frequently dialled numbers of the affiliated firms are easily called through a well sized bundle in the routes of the LCR, but for unknown DIDs it will be more difficult as only a very limited number of external lines will be available for this call.



Example 3: Other authorisation. If an internal line was set to **Obligatory use of LCR**, then the numbers of frequently phoned business partners could be entered into it. Then an internal subscriber calls these DIDs through the LCR route but they cannot call to other numbers in the public network because if a chosen number is not found in the LCR table that is obligatory for the subscriber, then the subscriber gets the engaged tone.

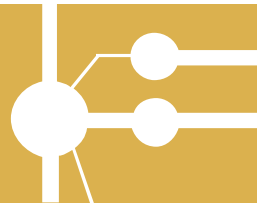
2.7. Groups

2.7.1. Designating lines

Group	Operator Day	Operator Night	FAX	Modem
Group 1	11	11	12	-
Group 2	-	-	-	-

It is possible to split subscribers into two groups on the PBX. For each main group it is possible to define the following privileged subscribers:

- Day - the number of the subscriber working as the operator for the DAY regime
- Night - the number of the subscriber working as the operator for the NIGHT regime
- Fax - the number of the subscriber where there is a fax for a group
- Modem - the number of the subscriber where there is a modem for a group



2.7.2. Intercoms

This table determines the intercoms' location on the internal lines. It is possible to set two intercoms for each group. Ringing from this line is characterised by being different from the usual ringing.

Groups - Porters		
Group 1		
	Line	Number
Porter 1	13	00
Porter 2	.	00
Group 2		
	Line	Number
Porter 1	.	00
Porter 2	.	00

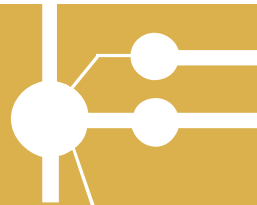
The selection **Number** enables a DTMF number to be sent to the intercom (e.g. 00 for 2N[®] – INTERCOM.) to open the door.

2.7.3. Switching time

Groups - Switching times									
Group 1					Group 2				
	Day	Night	Day	Night		Day	Night	Day	Night
Monday	6:00	12:00	12:30	17:00	Monday	0:00	0:00	0:00	0:00
Tuesday	7:00	12:30	13:00	16:00	Tuesday	0:00	0:00	0:00	0:00
Wednesd	7:00	16:00	0:00	0:00	Wednesd	0:00	0:00	0:00	0:00
Thursday	6:00	15:00	0:00	0:00	Thursday	0:00	0:00	0:00	0:00
Friday	6:00	11:00	12:00	15:00	Friday	0:00	0:00	0:00	0:00
Saturday	8:00	12:00	0:00	0:00	Saturday	0:00	0:00	0:00	0:00
Sunday	0:00	0:00	0:00	0:00	Sunday	0:00	0:00	0:00	0:00

State Automat
 State Automat

Day light saving



In this menu it is possible to set two times for automatically switching to the DAY and NIGHT regimes for each group and for every day. Ticking the box **Automatic** gives automatic switching at the requisite times. Not entering anything for the time means that there is no switching. So, for instance, leaving out one box for DAY and one for NIGHT only ensures one cycle of automatic switching during one day. Ticking the box **Automatic** gives automatic switching at the requisite times. The selection **State**, in which the choice of either DAY or NIGHT is entered, ensures the PBX is started in the given regime if automatic switching is not used. The choice **Change to summer time** ensures that the PBX automatically switches over to “summer or daylight saving time”.

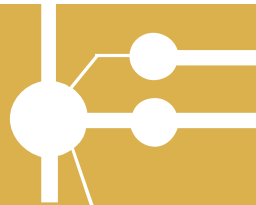
2.7.4. Global data

The screenshot displays the 'Groups - Global data' configuration window. It is divided into two main sections for 'Group 1' and 'Group 2'. Each group has a 'Written ciphers count' field set to '16_'. The 'Announcement tone' is set to 'Gener. sine 1' and 'OZT_PERMANENT'. There are also fields for 'Forwarding Message' and 'Call timeout message', both currently empty. At the bottom, there are settings for 'Pleasant waiting tone' (set to 'Aux 1') and 'DISA tone' (set to 'Gener. sine 1').

The choice **Number of registered figures** determines how many numbers are entered into the charging rows of work calls. Only the first five numbers of private calls are automatically displayed thus this choice has no effect on them, unless it is not set otherwise in the Global data – charging.

The choice **Dialling tone** enables the type of dialling tone to be selected from the constant type and the “Morse” type and the type for calling to a state line. The other types of tones are only for special applications. As a rule it is not necessary to make changes. If you wish to do so, then first select the tone source and then the cadence.

Music to make waiting more pleasant. Defines the source of music used during both internal and external waiting. Other types of tones are only used for special applications.



The voice at the start of redirecting is used at the start of being redirected to the VTS.

The voice when exceeding the call period during redirection is used as a notification that the call must end during redirecting, however at this moment it is possible to extend the call by 1-10 minutes before the voice gives the notification again by selecting DTMF (1-10) and selecting the call period.

Examples of voice:

The voice at the start of the redirecting

“Your call will be redirected”

The voice when exceeding the call period during redirection

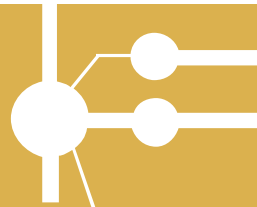
“You have a limited time for this call, through a tone selection you can extend the call by one to ten minutes, otherwise your call will be ended“

DISA tone

The tone that is used when calling DISA, if a voice is not played to the caller.

Attention: *If you want to use modem detection on an external line where the DISA is activated without a voice, then you are not allowed to use a continuous dialling tone.*

These voices they are not recorded as standard.



2.8. Numbering

2.8.1. Internal lines

See *Internal lines /Numbering*

2.8.2. Services

- Table for programming the numbering plan of the PBX's services.

2.8.3. DID for the ringing table

Enables an external subscriber to call through to the ringing table during a DID. If the DID number is not in agreement with the subscribers' DID or internal numbering and agrees with the number in the DID table for the ringing table then the ringing table is used, here set up with regards to the DAY and NIGHT regime.

Enables the ringing table to be set up during DID (ISDN – Point to Point type, DISA).

2.9. Operating parameters

2.9.1. Internal lines

2.9.1.1. Redirecting

This table clearly displays all of the redirecting for all of the internal subscribers.

2.9.1.2. Tariff credit

The item **Prepaid** serves for assigning the maximum number of 16 kHz impulses received. When the assigned number is reached the call automatically ends. A new call can be made as soon as a new credit programme is topped up.

2.9.1.3. Blocking

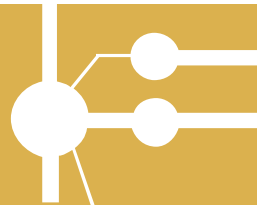
Here it is possible to easily check or set blocking for each internal line including its password and not stop the service.

2.9.1.4. Alarms

Set up an "alarm" on each line. It is possible to choose between "Single" or "Repeating".

2.9.1.5. Account statistics

Clearly displays the costs of the internal lines from outgoing calls through the external lines that have tariffs. An update is available during each data reading from the PBX.



2.9.2. External lines

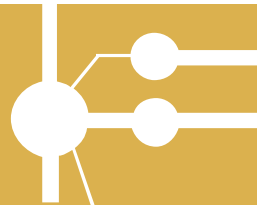
2.9.2.1. Making accessible

The table has as many columns as there are internal subscribers and as many rows as there are external lines. Thus at intersections it is possible to tick or end an internal subscriber's access to each external line.

2.9.2.2. Tariff credit and Blocking

The item **Prepaid** serves for assigning the maximum number of 16 kHz impulses received. When the assigned number is reached the call automatically ends. A new call cannot be made through this external line. Credit must be topped up through a programme.

The item **Blocking** enables an external line to be blocked for example during a breakdown.



2.10. Mobility Extension

Mobility Extension function enables telephone stations (preferably GSM telephones to share internal line services (switching, dialing VTS,..) outside the PBX.

Primary setup is made by the PBX administrator.

2.10.1. Mobility Extension IN

Here you set up the conditions for Mobility Extension in the incoming direction from the external telephone number (preferably from a GSM telephone).

Mobility Extension - In				
Line	Name	Number	Password	Order of used common short dial
1	...			0
2	...			1

Enter:

Line - internal that should have the Mobility Extension service (sharing identical services with an external telephone number) activated. One internal line has one external telephone number allocated. After being allocated in one of the menu lines offered (according to the ME license inserted) it will not be displayed in the following ones.

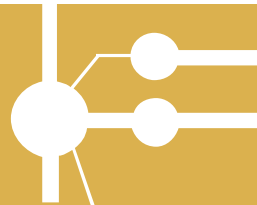
Name - Name of the external telephone number (enter the name without diacritics). The name is shown on the display of the system telephone.

Number - external telephone number.

Password - personal password of the allocated internal line. It is the same as the password set up in the *“Internal lines/Operating parameters/Blocking”* MENU. If it is allowed to enter a password it is always necessary, when calling from this external telephone number, to enter the password first and then further dialing is possible. The user is asked to enter the password with the following message: *“Enter password”*.

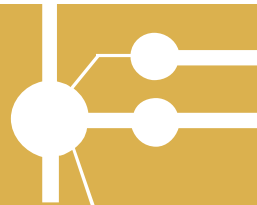
Order of used common short dial - after entering the Name and Number, a new common quick dialing is established, whose ordinal number is displayed. Always the first free common quick dialing is offered.

Mobility Extension - In					
Line	Name	Number	Password	Order of used common short dial	
1	14	Petr	603123456	<input type="checkbox"/> Y/N XXXX	0
2	18	Pavel	777987654	<input checked="" type="checkbox"/> Y/N XXXX	1



A common quick dialing established in the Mobility Extension IN/OUT environment can only be edited here. Direct editing in the “*Common quick dialing*” MENU is block for such dialing.

Short dials common			
	Text	Number	
0	<input type="text" value="Petr"/>	<input type="text" value="603123456"/>	<input type="checkbox"/> Not able for group 1
	Call Type	<input type="text" value="Trunk 4"/>	<input type="checkbox"/> Not able for group 2
			<input type="checkbox"/> By-pass authorization
			<input type="checkbox"/> Not able to delete
			<input checked="" type="checkbox"/> Wait for trunk
1	<input type="text" value="Pavel"/>	<input type="text" value="777987654"/>	<input type="checkbox"/> Not able for group 1
	Call Type	<input type="text" value="Trunk 5"/>	<input type="checkbox"/> Not able for group 2
			<input type="checkbox"/> By-pass authorization
			<input type="checkbox"/> Not able to delete
			<input type="checkbox"/> Wait for trunk



2.10.2. Mobility Extension OUT

Here you set up the conditions for Mobility Extension in the outgoing direction, the allocated internal line rings.

Editing the settings for the outgoing direction is only possible if Mobility Extension IN is entered. Otherwise no MENU is offered.

Mobility Extension - Out						
Line	Name	Call at day	Call at night	Call Type	Wait for trunk	SMS No ans.
14	Petr	Immediately	Never	Trunk 4	<input checked="" type="checkbox"/> Y/N	<input checked="" type="checkbox"/> Y/N
18	Pavel	Never	After 1 ring	Trunk 5	<input type="checkbox"/> Y/N	<input checked="" type="checkbox"/> Y/N

SMS at No Answer:

Line and **Name** of the respective telephone number (respective common quick dialing) is automatically transferred to this table from the Mobility Extension IN settings.

Then enter:

Call at day - whether outgoing Mobility Extension should be activated or not if the PBX is in the DAY mode. The setup parameters are “*Never, Immediately, after 1-9 rings*”

Warning: If you select Immediately and the outgoing calls are made via GSM gateway it will take approximately 10 seconds before the external telephone starts ringing (because of the connection method within the GSM network).

Call at night - whether outgoing Mobility Extension should be activated or not if the PBX is in the NIGHT mode. The setup parameters are “*Never, Immediately, after 1-9 rings*”.

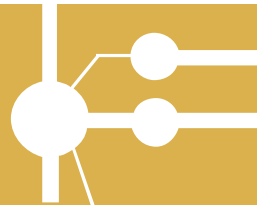
Warning: If you select Immediately and the outgoing calls are made via GSM gateway it will take approximately 10 seconds before the external telephone starts ringing (because of the connection method within the GSM network).

Call type - enter, over which bundle of external lines the respective outgoing Mobility Extension should be made. Selected can be only those bundles that do not include analog external lines.

Wait for trunk- whether the system should wait until the busy line in the respective bundle has been released or not. If all lines in the respective bundle are busy and “Waiting for bundle” is allowed the system waits until the external line in the bundle is released. Otherwise the outgoing call is not made.

SMS No Answer - whether or not an SMS message should be sent if the called party at the external telephone number is not answering the call.

SMS at No Answer - text of the SMS message, which should be sent, if “*SMS no answer*”, to the external telephone number. It is possible to include the caller identification (%n) in the text, as well as the name of the caller (%c) if such number is found in the PBX telephone book.



2.10.3. Mobility Extension services

These services are executed based on a command from Mobility Extension. After detecting the DTMF characters entered on the end of the external telephone number this service is simulated in the PBX.

Mobility Extension - Services	
Service	Number
FLASH	7*
Double FLASH	
Hang up	9#
Password repeat count	3

Here enter:

FLASH - DTMF characters, after which FLASH (a short line interruption) is to be generated in the call in order to be able to transfer the call or dial another service.

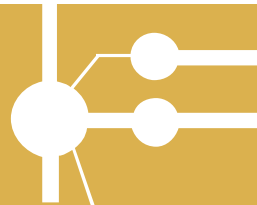
Double FLASH - DTMF characters, after which FLASH - FLASH (a short line interruption, twice after each other) is to be generated in the call. Not designed for direct use in the PBX.

Hang up - DTMF characters, after which:

- in the case of transferring calls, the transfer is made but the connection of the external telephone number with the external line is not terminated and it is possible to continue dialing (calling VL, calling VTS, calling a service).

- in the case of hesitating to dial (time supervision of dialing the first and the next digit expires – the subscriber hears a congestion tone), the dialing tone is heard again and the PBX is ready for receiving dialing.

Password repeat count - maximum number of attempts to enter the user password for the line (if required).



2.11. Short / Speed - Dialing

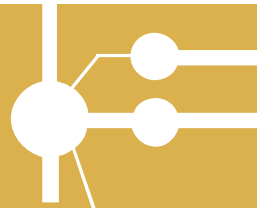
2.11.1. Common Abbreviated Dialing

You can enter up to **200 common abbreviated dialing options** into the PBX.

	Text	Number	
0	Peter	601222333	<input type="checkbox"/> Not able for group 1
	Call Type	Automat	<input type="checkbox"/> Not able for group 2
			<input type="checkbox"/> By-pass authorization
			<input checked="" type="checkbox"/> Not able to delete
			<input type="checkbox"/> Used for ME
			<input type="checkbox"/> Wait for trunk
			<input type="checkbox"/> Send SMS at no answer
1	John	777888999	<input type="checkbox"/> Not able for group 1
	Call Type	Trunk 5	<input type="checkbox"/> Not able for group 2
			<input type="checkbox"/> By-pass authorization
			<input checked="" type="checkbox"/> Not able to delete
			<input type="checkbox"/> Used for ME
			<input checked="" type="checkbox"/> Wait for trunk
			<input type="checkbox"/> Send SMS at no answer

0-24 25-49 50-74 75-99 100-124 125-149 150-174 175-199

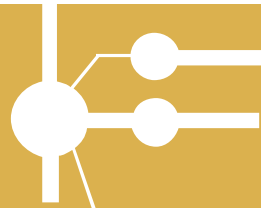
Free memory: 65261 99%

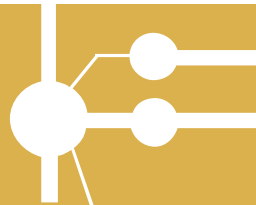


2.11.2. Private Abbreviated Dialing

Key telephone users may enter additional **112 private dialing options** that can be retrieved from the particular key telephone only.

2N[®] - OMEGA Lite Configuration instrument





2.13. REMOTE SUPERVISION

2.13.1. What Remote Supervision Provides:

- instantaneous response to client needs
- 2N[®] - OMEGA Lite PBX programming while keeping parameters of a serial link
- firmware modification
- ISDN module tracing
- time RESET setting
- PBX port status monitoring
- speech bus traffic monitoring
- call billing DATA downloading
- log-system DATA downloading

2.13.2. What You Need

To establish a modem-based remote connection you need:


- a PC with installed OMEGA Lite Program
- a modem (not winmodem) connected to the PC
- a file (YYMM-XXXXX.PBX) with access licence to the 2N[®] - OMEGA LITE PBX to be supervised.

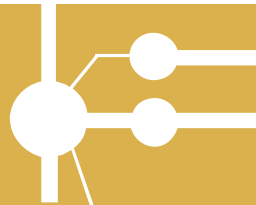
PBX Modem Setting

The internal modem is configured using the OMEGA LITE Program programming tool. The modem is set using AT commands (we do not recommend you to change the factory settings unless absolutely necessary) and the PBX has to be RESET upon every change. The modem change will be apparent 10s after the RESET.

2.13.3. Creating and writing of a gateway remote access code

To enable remote control of 2N[®] - OMEGA LITE PBX, it is necessary to create an access code and write it into the gateway.

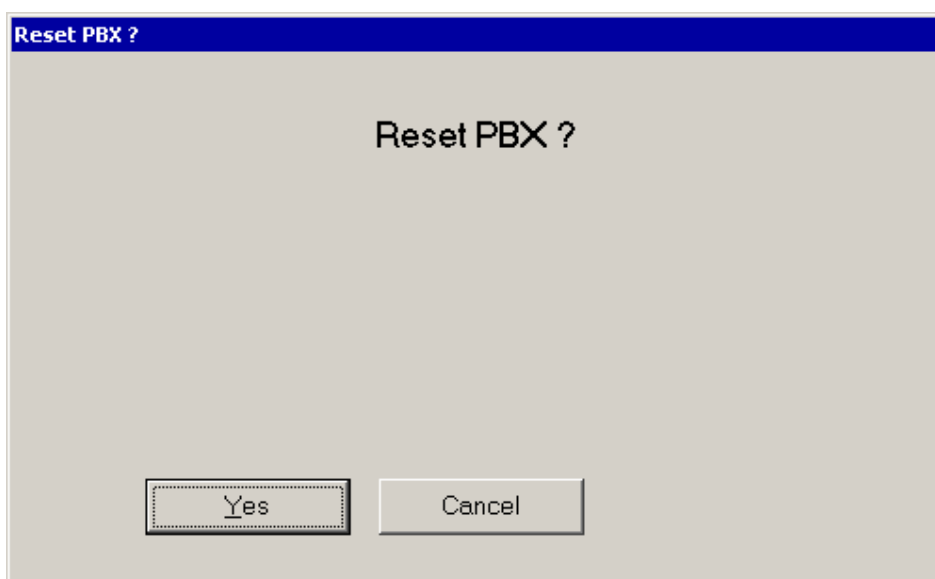
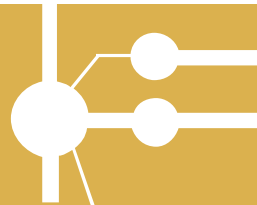
1. Press the „Connect with PBX“  button on the tray.
2. Press button „Create“.



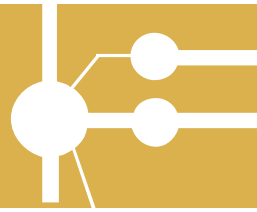
3. you must fill in the PbX *Serial number*.
4. you must fill in a phone number, which will be used for the remote modem connection.
5. you may enter information about customer and dealer.
6. click /OK/ for confirmation.
7. choose the correct code from the offered codes and write it into the PbX by pressing „Store Code“. While writing the code, it is necessary to be connected to the PbX over serial interface.



8. While writing a new code, you will be notified if a code already exists. By pressing Ignore button, code will be overwritten.



Note: Always create access codes matching an existing valid serial number of gateway.



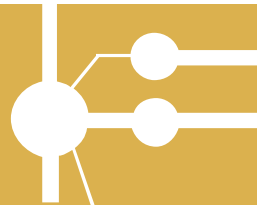
2.13.4. Description of OMEGA Lite Program Menus and Bar Buttons










MENU – WINDOWS

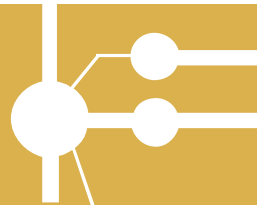
Panel – when the connection with the PBX to be supervised has been established, the statuses of all lines and speech buses are displayed.

Billing data – when billing and diagnostic lines have been read from the file (YYMM-XXXXX.ACC), the billing data (calls) are displayed in the window.

PBX diagnostics - when accounting and diagnostic lines have been read from the file (YYMM-XXXXX.DIA) the diagnostic data (log-system lines) are displayed in the window



-  **Connect to PBX** – the window with a directory tree for selecting a file to establish connection with the PBX to be supervised.
-  **Disconnect modem connection** – disconnects from the supervised PBX, keeping the selection of the PBX in OMEGA LITE Program.
-  **Recover modem connection** – recovers connection with the selected PBX upon Disconnect modem connection.
-  **Cancel connection with PBX** – cancels connection with the supervised PBX and selection of the PBX in OMEGA LITE Program.
-  **Set communication** – displays the window for communication and connected modem parameter setting.
-  **Download billing and diagnostic lines** – downloads call billing and log-system line DATA.
-  **Trace** – downloads tracing lines from ISDN.
-  **Download data from PBX** – downloads the configuration of the PBX to be supervised.
-  **Save data into PBX** – saves the configuration of the PBX to be supervised.



2.13.5. Types of Establishing Connection

It is possible to establish connection with an 2N[®] - OMEGA Lite PBX to be supervised:

- automatically; or
- manually.

2.13.6. AUTOMATIC CONNECTION

Settings of PBX To Be Supervised

Automatic connection can be used for a PBX provided that:

1. a DDI to the ISDN line ringing chart is reserved for remote supervision;
2. an ISDN MSN line is reserved for remote supervision;
3. a CO line is reserved for remote supervision;
4. the DISA to the ringing chart is used;
5. the modem connection detection is enabled in DISA.

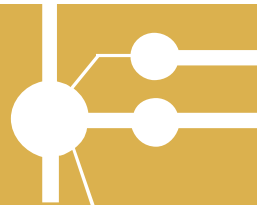
Example of ringing chart set-up for types 1 – 3:

Interconnect remote supervision	...		
Ring to operator		...	
Wait			0
Hang up			...

Example of ringing chart set-up for types 4 – 5:

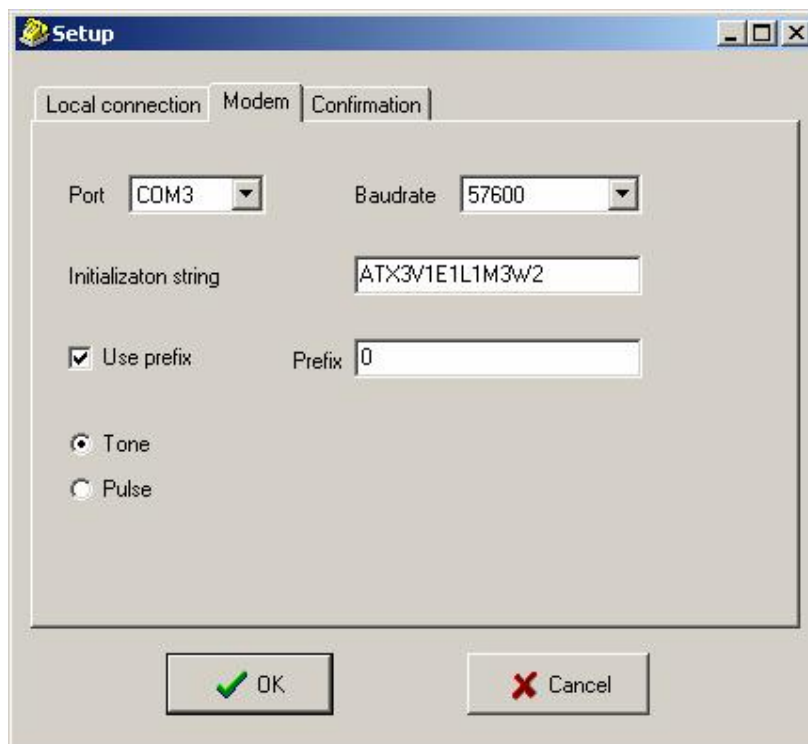
DISA	...		
Wait		6	
DISA END	...		
Ring to operator	...		
Wait		0	
Hang up		...	

Note: With remote supervision type 5, you have to set the GLOBAL DATA – MODEM – Modem switch to remote supervision in the programming tool. The DISA tone may not be dialtone permanently.

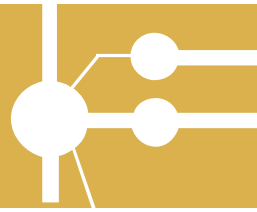


Establishing Connection

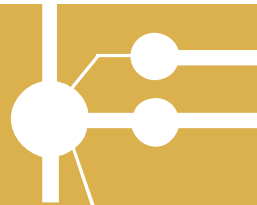
9. Run the OMEGA Lite Program SW.
10. Press the bar button SET COMMUNICATION ('tools' symbol) and check and set the modem parameters:
 - set the COM port connected to the modem;
 - select the communication rate (according to the modem capacities);
 - select the use of PREFIX (of the master PBX, set the modem connecting tone transmission (^ or 'up arrow' symbol (above digit 6) according to the modem type);
 - select the CO dialling type;
 - confirm the settings by pressing OK.



11. Press the bar button CONNECT TO PBX (three OMEGA LITE symbols in a sequence).
12. Click (using your mouse) on the YYYY-XXXXX.PBX file, which is used for remote supervision.
13. Press the CONNECT MODEM AUTO button.
14. Select the technician responsible for remote supervision, confirm the access password (or select a new technician by pressing the NEW button) and quit the dialog window by clicking on OK.
15. Click on the telephone number used for remote supervision (including DISA number if DISA is used) and press the DIAL button (this dialog window is not displayed if there is only one telephone number).



16. Now the connection is being established.
17. If everything is OK, the following information will be displayed gradually:
 - establishing connection;
 - connection established;
 - remote supervision password confirmed.
18. The following data are displayed on the bottom bar from the left to the right:
 - connection type (MOD);
 - time of the PBX to be supervised (activity is indicated by a pulsating target);
 - production number of the PBX to be supervised (YYMM/XXXXX connected).
11. Go on as if you used a serial link.



2.13.7. MANUAL CONNECTION

Setting of PBX To Be Supervised

Manual connection is used if :

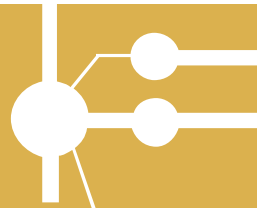
1. No automatic connection can be made.

Example of ringing chart set-up:

Ring to allowed	...	
Ring to operator	...	
Wait		0
Hang up	...	

Establishing Connection

1. Run the OMEGA Lite Program SW.
2. Press the bar button SET COMMUNICATION ('tools' symbol) and check and set the modem parameters:
 - set the COM port connected to the modem;
 - select the communication rate (according to the modem capacities);
 - select the use of PREFIX (of the master PBX, set the modem connecting tone transmission (^ or 'up arrow' symbol (above digit 6) according to the modem type);
 - select the CO dialling type;
 - confirm the settings by pressing OK.
3. Press the bar button CONNECT TO PBX (three OMEGA LITE symbols in a sequence).
4. Click (using your mouse) on the YYYY-XXXXX.PBX file, which is to be used for remote supervision.
5. Press the CONNECT MODEM MANUAL button.
6. Select the technician responsible for remote supervision, confirm the access password (or select a new technician by pressing the NEW button) and quit the dialog window by clicking on OK.
7. Dial the telephone number to be used for remote supervision on the telephone set connected to the modem, get transferred by the TRANSFER TO REMOTE SUPERVISION (default value # # (the operator dials FLASH ## into the call)) , and then press the ATA button.
8. Now the connection is being established.
9. If everything is OK, the following information will be displayed gradually:
 - establishing connection;
 - connection established;



- remote supervision password confirmed.
10. The following data are displayed on the bottom bar from the left to the right:
- connection type (MOD);
 - time of the PBX to be supervised (activity is indicated by a pulsating target);
 - production number of the PBX to be supervised (YYMM/XXXXXX connected).
11. Go on as if you used a serial link.

2.13.8. Downloading Data

With the PBX connected, you can download DATA (billing + system messages). To download data, press the bar button DOWNLOAD BILLING AND DIAGN. LINES (\$ symbol) of the OMEGA Lite Program tool.

The two DATA types are downloaded together and the course of downloading is monitored graphically by the so-called thermometer.

To display the DATA, select the WINDOWS – BILLING DATA menu, or PBX DIAGNOSTICS.

Data are displayed from the file (YYMM-XXXXX.ACC, or YYMM-XXXXX.DIA) after being downloaded from the PBX. These files are created upon the first download in the remote supervision file directory (YYMM-XXXXX.PBX) and extended with new data upon re-loading.

2.13.9. Panel

Once the connection has been established, you can display the port status panel of the PBX to be supervised including speech bus configuration by pressing the WINDOWS – PANEL. With the PBX connected, bus 11 and status 'call' shall always be displayed for the line used for remote supervision.

2.13.10. Remote Supervision Logistics

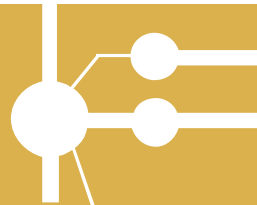
A record is made on the remote supervision in progress in the RRMM-XXXXX.LOG file, including when, how and by which technician the connection was established and whether the technician downloaded or saved configuration from/into the PBX.

This file is saved together with the YYMM-XXXXX.PBX file.

2.13.11. Disconnecting Connection

A modem connection can be discontinued (for cost cutting reasons) by pressing the bar button DISCONNECT MODEM CONNECTION ('pause' symbol (two perpendicular lines in a green field)).

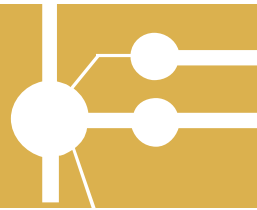
By pressing this button you discontinue the connection keeping the original connection settings. This means that to recover connection, you just press the bar button RECOVER MODEM CONNECTION ('replay' symbol (black arrow in a green field)) and the number will be dialled automatically and the connection will be re-established.



If you used manual connection, you will be invited to dial the telephone number manually.

2.13.12. Cancelling Connection

To cancel the established connection press the bar button CANCEL MODEM CONNECTION WITH PBX (cross in a red field). By pressing this button you cancel the connection and selection of the PBX in the programming tool.



The manufacturer reserves the right, in contrast to the submitted documentation, to make modifications to the product that will improve the product's properties.

Please use the product in accord with the instructions and for the purpose for which it was designed and manufactured.

After the product or its components have come to the end of their lifespan please dispose of them in accordance with the valid legal provisions for environmental protection.